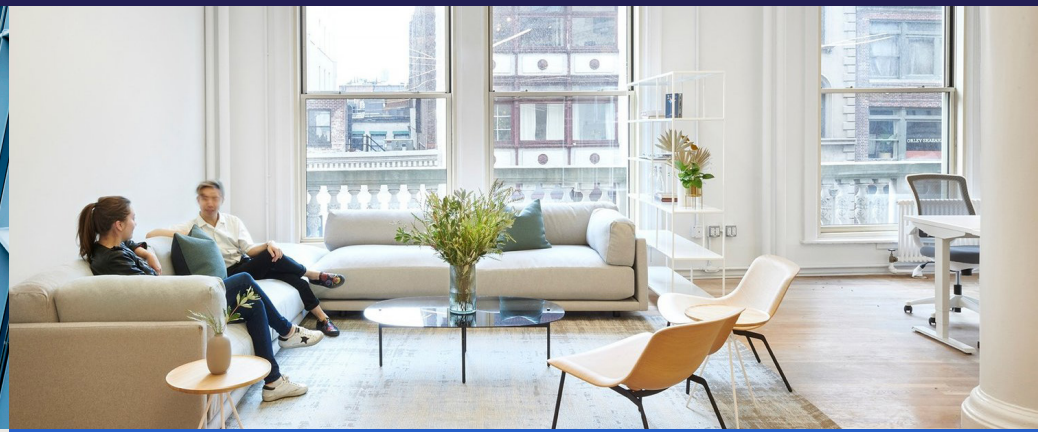


6,203 SQFT	4,964 SQFT	5,028 SQFT	5,046 SQFT	4,830 SQFT	4,740 SQFT	2,412 SQFT
G & LG	1st Floor	2nd Floor	3rd Floor	4th Floor	5th Floor	6th & 7th Fl.
64 max	72 max	72 max	72 max	72 max	72 max	22 max
£174 psf	£192 psf	£192 psf	£192 psf	£192 psf	£192 psf	£199 psf
Sept. 2022	Sept. 2022	Sept. 2022	Sept. 2022	Sept. 2022	Sept. 2022	Sept. 2022





We believe a company's space should enable their growth.

Knotel's flexible workspace platform adapts to your needs, giving you not only the right space but the right experience, strategy, and design to move your company forward.

Location



Description

One Lackington is a uniquely up to date building where people want to work as they want to live. The building thoughtfully considers its characterful past and emphasises a new vision of space with luminous daylight, external spaces, and a focus on sustainable architecture. An interesting richly textured place to work, One Lackington has heart and soul.

Originally designed as a private members club by Frederick Gould and Giles Gilbert Scott, designer of the iconic British red telephone box and architect of Bankside Power Station now the Tate Modern, One Lackington has been returned to its former glory. Close attention has been paid to the unique and original features of this magnificent heritage building.

The new refurbishment brings out the distinctive, characterful – surprising – nature of the original building, and introduces new standards of daylight, exterior spaces, clean air via natural ventilation from opening windows and sustainability.

Commute

The building is extremely well located, with Moorgate station on the doorstep and Liverpool Street Station a 5-minute walk away, providing easy access to both the City and the West End in minutes.



Experience



Building overview

6,203 SQFT

64 max £174 psf

G & LG
Sept. 2022

4,964 SQFT

72 max £192psf

1st Floor
Sept. 2022

5,028 SQFT

72 max £192 psf

2nd Floor
Sept. 2022

5,046 SQFT

72 max £192 psf

3rd Floor
Sept. 2022

4,830 SQFT

72 max £192 psf

4th Floor
Sept. 2022

4,740 SQFT

72 max £192 psf

5th Floor
Sept. 2022

2,412 SQFT

22 max £199 psf

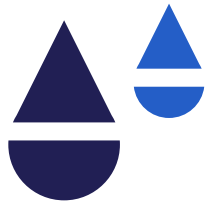
6th & 7th Floor
Sept. 2022



Specification Summary



33 Cycle Spaces



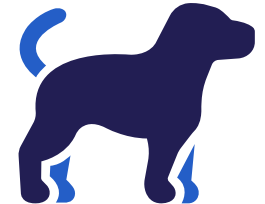
17
Showers



33
Lockers



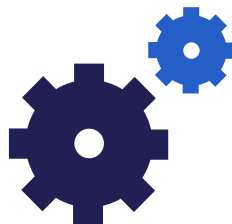
2.4 - 3.9m Ceiling Height



Yes Pet Friendly?



Yes DDA Compliant?



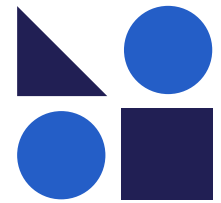
Air-Con Spec
New underfloor air-conditioning system (UFAC)



24/7
Access



Travel
Moorgate 2 mins
Liverpool St 5 mins
Old St 7 mins
Bank 10 mins



Extras
Courtyard and terrace space



1st Floor Reception



6th Floor Teapoint



7th Floor Workspace



Lower Ground Floor Workspace



1st Floor Teapoint



Lower Ground Floor Meeting Room



1st Floor Workspace



Lower Ground Floor Breakout

Square footage

Net Internal Area (sqft)
Both floors (LG + GF)

Level LG

3,006
6,203

WPS Numbers

of Dedicated Workstations 30
of Day 02 workstations 6
of Collaboration Seats 11
of Enclosed Meeting Seats 10
Workstation maximum density 35

Room Counts

Meeting Spaces		Collaborative Spaces		Support Spaces	
(4p) Small Meeting Room	1	Arrival	-	Knotel Store	1
(6p) Medium Meeting Room	1	Collaboration	1	Member Store	1
(8p) Medium Meeting Room	-	Touchdown	-	Comms Room	1
(12p) Large Meeting Room	-	Tea Point	-		
(18p) Extra Large Meeting Room	-	Lounge	1		
(30p) Boardroom	-	Workspace 01	1		
(40p) Multi-Purpose Room	-	Workspace 02	-		
(1p) Phonebooths	3	Meeting Nook	-		
(2p) Phonebooths	1	Amenities/Copy Point	1		
Airpod 23	-	Lockers	1		
		Breakout	-		



Core areas

Ancillary

Meeting

Workstations

Level 00

Square footage

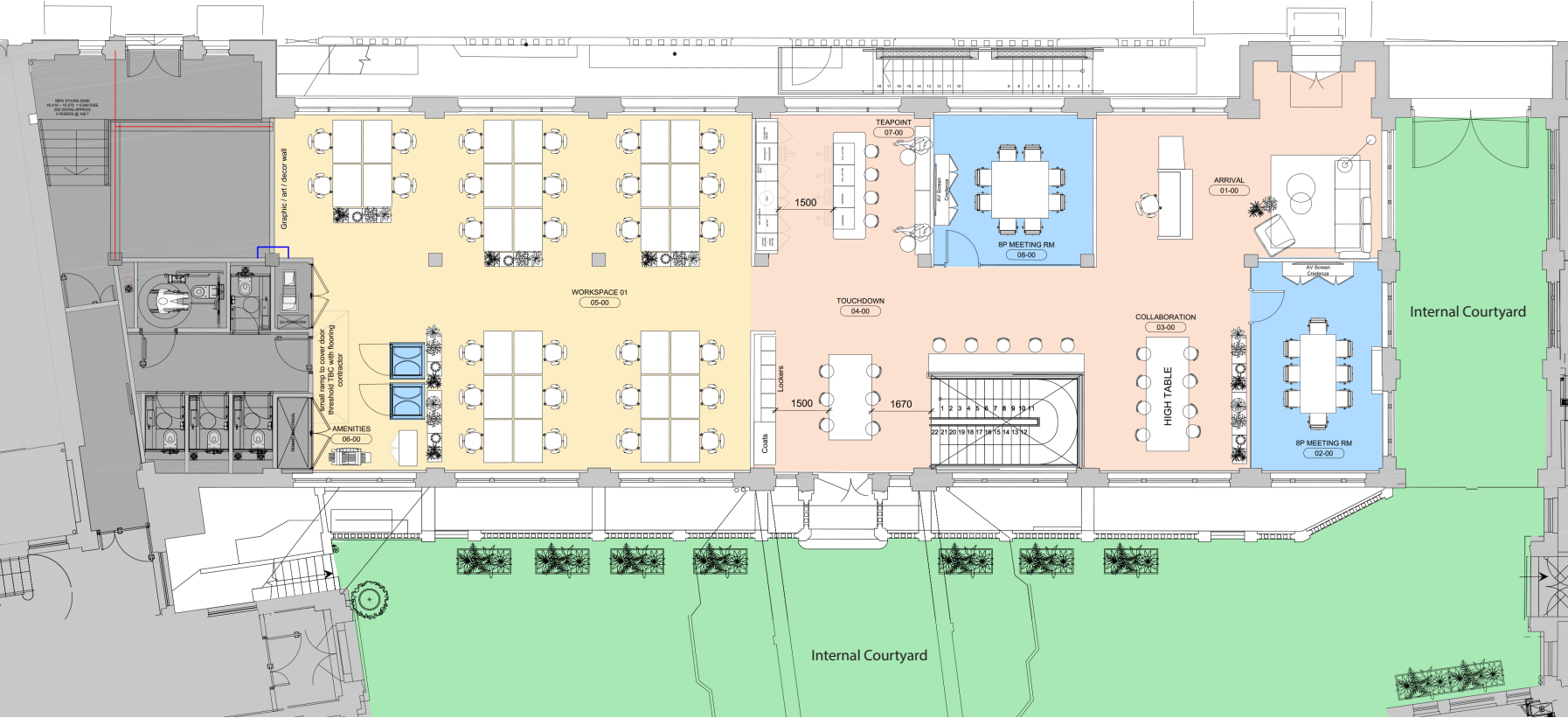
Net Internal Area (sqft) 3,197
Both floors (LG + GF) 6,203

WPS Numbers

of Dedicated Workstations 28
of Day 02 workstations -
of Collaboration Seats 19
of Enclosed Meeting Seats 18
Workstation maximum capacity 37

Room Counts

Meeting Spaces					
(4p) Small Meeting Room	-				
(6p) Medium Meeting Room	-				
(8p) Medium Meeting Room	2				
(12p) Large Meeting Room	-				
(18p) Extra Large Meeting Room	-				
(30p) Boardroom	-				
(40p) Mutli-Purpose Room	-				
(1p) Phonebooths	2				
(2p) Phonebooths	-				
Airpod 23	-				
Collaborative Spaces					
Arrival	1				Support Spaces
Collaboration	1				Knotel Store -
Touchdown	1				Member Store -
Tea Point	1				Comms Room -
Lounge	-				
Workspace 01	1				
Workspace 02	-				
Meeting Nook	-				
Amenities/Copy Point	1				
Lockers	1				
Breakout	-				



Core areas

Ancillary

Meeting

Workstations

Level 01

Square footage

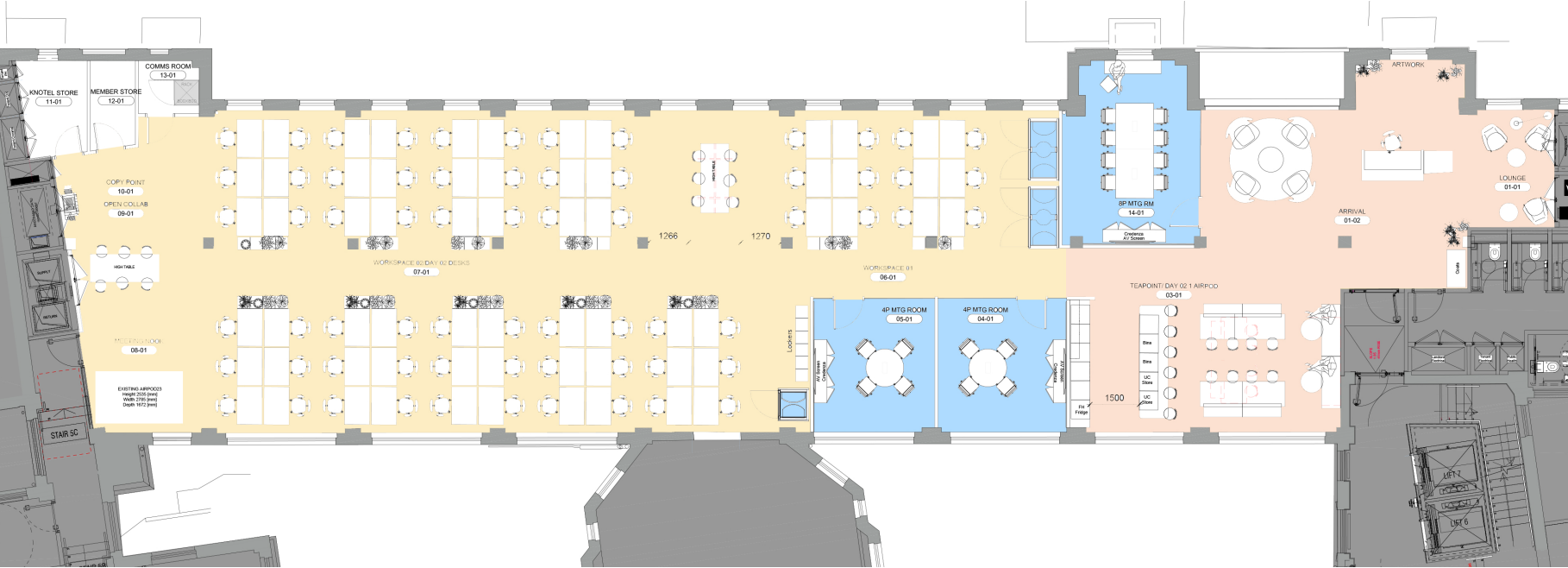
Net Internal Area (sqft) 4,964

WPS Numbers

of Dedicated Workstations 66
of Day 02 workstations 6
of Collaboration Seats 12
of Enclosed Meeting Seats 21
Workstation maximum density 65

Room Counts

Meeting Spaces		Collaborative Spaces		Support Spaces	
(4p) Small Meeting Room	2	Arrival	1	Knotel Store	1
(6p) Medium Meeting Room	-	Collaboration	1	Member Store	1
(8p) Medium Meeting Room	1	Touchdown	-	Comms Room	1
(12p) Large Meeting Room	-	Tea Point	1		
(18p) Extra Large Meeting Room	-	Lounge	1		
(30p) Boardroom	-	Workspace 01	1		
(40p) Mutli-Purpose Room	-	Workspace 02	1		
(1p) Phonebooths	1	Meeting Nook	1		
(2p) Phonebooths	2	Amenities/Copy Point	1		
Airpod 23	1	Lockers	1		
		Breakout	-		



Core areas

Ancillary

Meeting

Workstations

Level 02

Square footage

Net Internal Area (sqft)

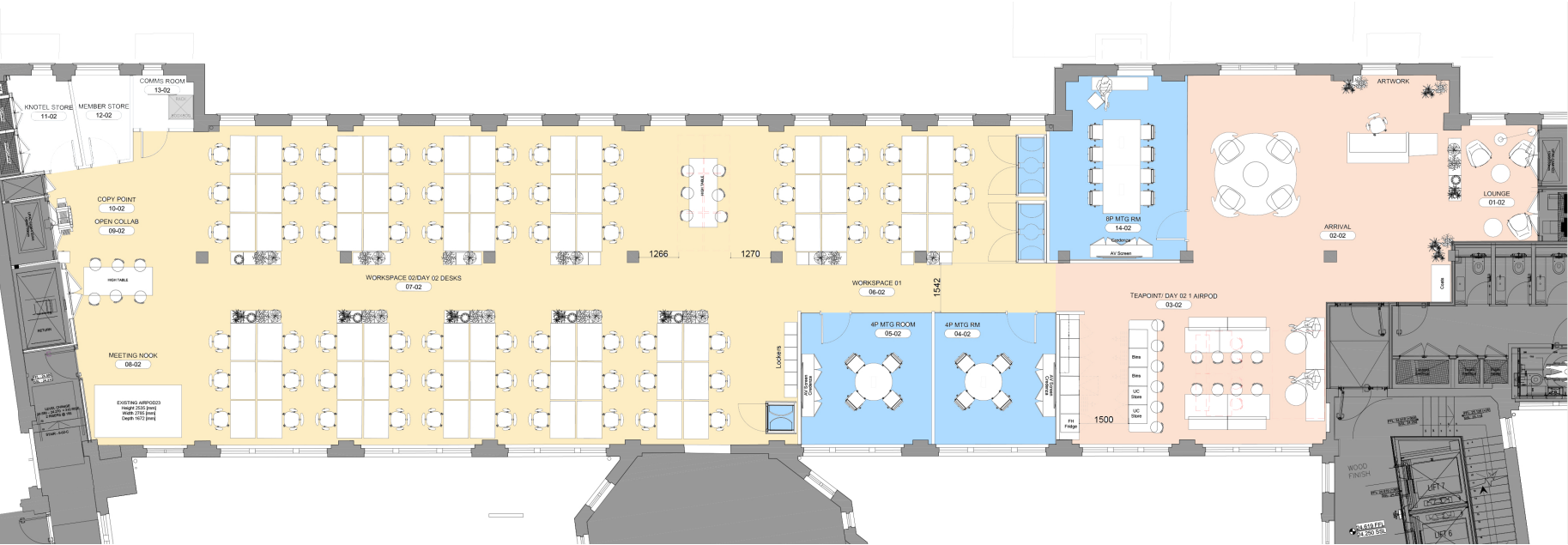
5,028

WPS Numbers

# of Dedicated Workstations	66
# of Day 02 workstations	6
# of Collaboration Seats	12
# of Enclosed Meeting Seats	21
Workstation maximum density	66

Room Counts

Meeting Spaces		Collaborative Spaces		Support Spaces	
(4p) Small Meeting Room	2	Arrival	1	Knotel Store	1
(6p) Medium Meeting Room	-	Collaboration	1	Member Store	1
(8p) Medium Meeting Room	1	Touchdown	-	Comms Room	1
(12p) Large Meeting Room	-	Tea Point	1		
(18p) Extra Large Meeting Room	-	Lounge	1		
(30p) Boardroom	-	Workspace 01	1		
(40p) Mutli-Purpose Room	-	Workspace 02	1		
(1p) Phonebooths	1	Meeting Nook	1		
(2p) Phonebooths	2	Amenities/Copy Point	1		
Airpod 23	1	Lockers	1		
		Breakout	-		



Core areas

Ancillary

Meeting

Workstations

Level 03

Square footage

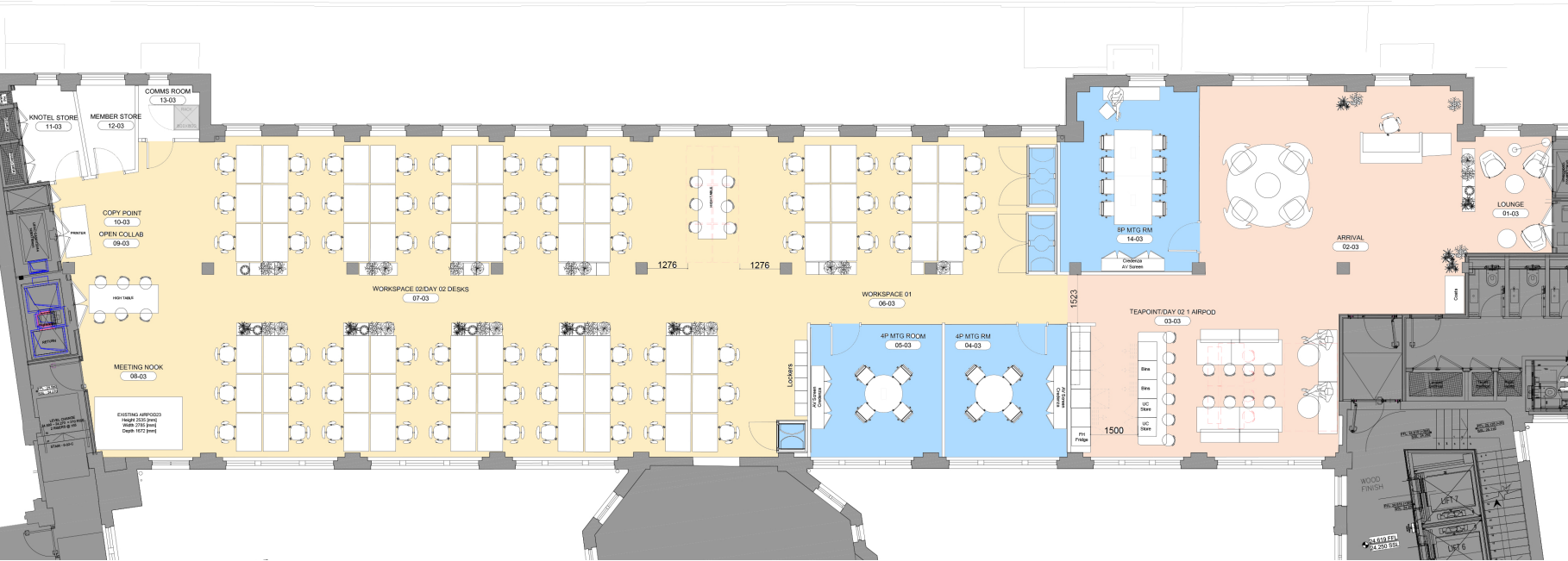
Net Internal Area (sqft) 5,046

WPS Numbers

of Dedicated Workstations 66
of Day 02 workstations 6
of Collaboration Seats 12
of Enclosed Meeting Seats 21
Workstation maximum density 67

Room Counts

Meeting Spaces		Collaborative Spaces		Support Spaces	
(4p) Small Meeting Room	2	Arrival	1	Knotel Store	1
(6p) Medium Meeting Room	-	Collaboration	1	Member Store	1
(8p) Medium Meeting Room	1	Touchdown	-	Comms Room	1
(12p) Large Meeting Room	-	Tea Point	1		
(18p) Extra Large Meeting Room	-	Lounge	1		
(30p) Boardroom	-	Workspace 01	1		
(40p) Mutli-Purpose Room	-	Workspace 02	1		
(1p) Phonebooths	1	Meeting Nook	1		
(2p) Phonebooths	2	Amenities/Copy Point	1		
Airpod 23	1	Lockers	1		
		Breakout	-		

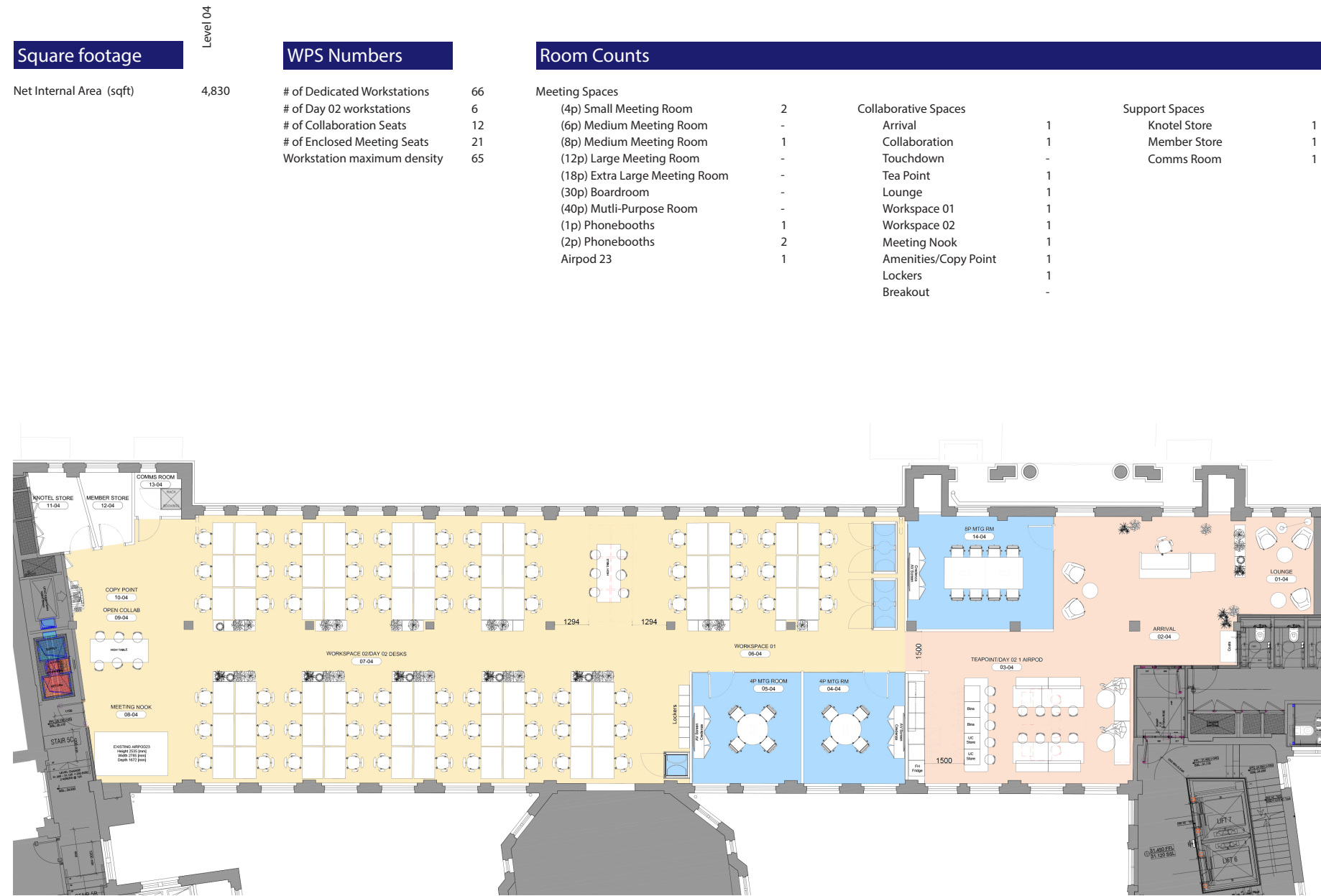


Core areas

Ancillary

Meeting

Workstations



Level 05

Square footage

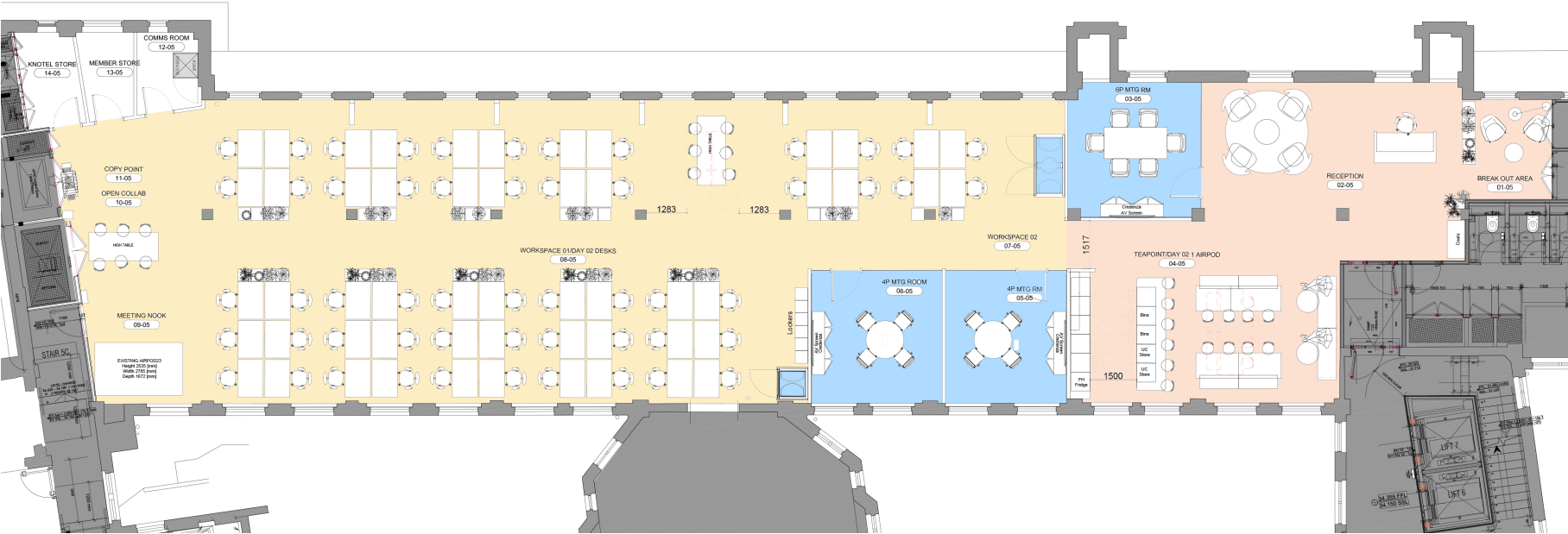
Net Internal Area (sqft) 4,740

WPS Numbers

of Dedicated Workstations 54
of Day 02 workstations 4
of Collaboration Seats 12
of Enclosed Meeting Seats 62
Workstation maximum density

Room Counts

Meeting Spaces		Collaborative Spaces		Support Spaces	
(4p) Small Meeting Room	2	Arrival	1	Knotel Store	1
(6p) Medium Meeting Room	1	Collaboration	1	Member Store	1
(8p) Medium Meeting Room	-	Touchdown	-	Comms Room	1
(12p) Large Meeting Room	-	Tea Point	1		
(18p) Extra Large Meeting Room	-	Lounge	1		
(30p) Boardroom	-	Workspace 01	1		
(40p) Mutli-Purpose Room	-	Workspace 02	1		
(1p) Phonebooths	1	Meeting Nook	1		
(2p) Phonebooths	1	Amenities/Copy Point	1		
Airpod 23	1	Lockers	1		
		Breakout	-		



Core areas

Ancillary

Meeting

Workstations

Square footage

Net Internal Area 06 (sqft)	1,254
Net Internal Area 07 (sqft)	1,158
Both floors (06+07)	2,412

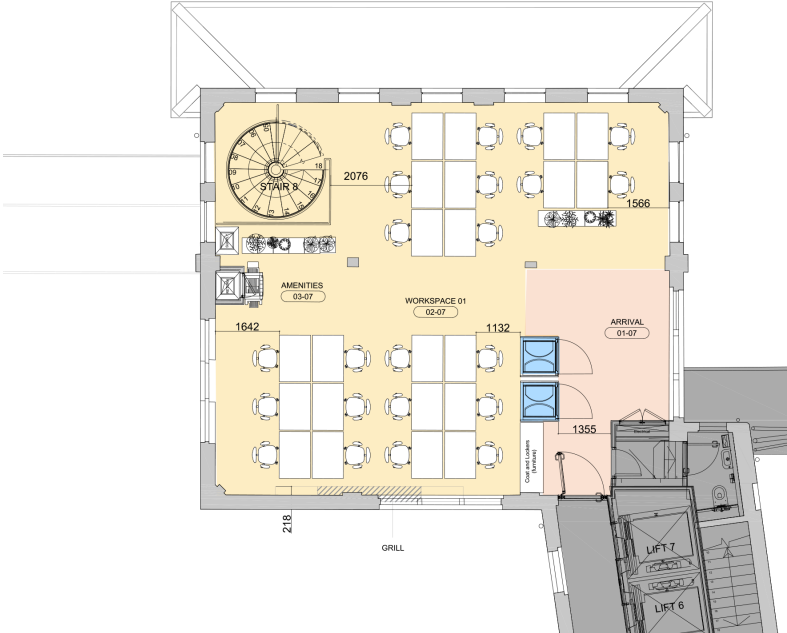
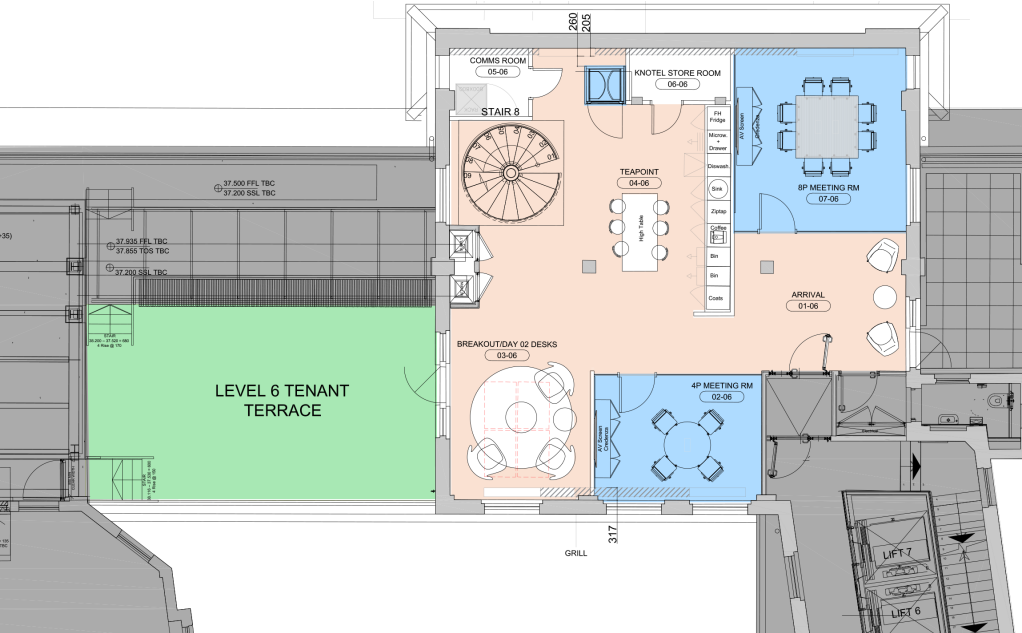
Level 06
Level 07

WPS Numbers

# of Dedicated Workstations	22
# of Day 02 workstations	4
# of Collaboration Seats	6
# of Enclosed Meeting Seats	15
Workstation maximum density	14 each fl

Room Counts

Meeting Spaces			
(4p) Small Meeting Room	1		
(6p) Medium Meeting Room	-		
(8p) Medium Meeting Room	1		
(12p) Large Meeting Room	-		
(18p) Extra Large Meeting Room	-		
(30p) Boardroom	-		
(40p) Mutli-Purpose Room	-		
(1p) Phonebooths	3		
(2p) Phonebooths	-		
Airpod 23	-		
Collaborative Spaces			
Arrival	2		
Collaboration	-		
Touchdown	-		
Tea Point	1		
Lounge	1		
Workspace 01	1		
Workspace 02	1		
Meeting Nook	-		
Amenities/Copy Point	1		
Lockers	1		
Breakout	1		
Support Spaces			
Knotel Store	1		
Member Store	-		
Comms Room	1		



Core areas
Ancillary
Meeting
Workstations

Match

We source a selection of possible spaces based on workplace insights, ensuring that each is suited to the company's business goals and work styles.

Tailor

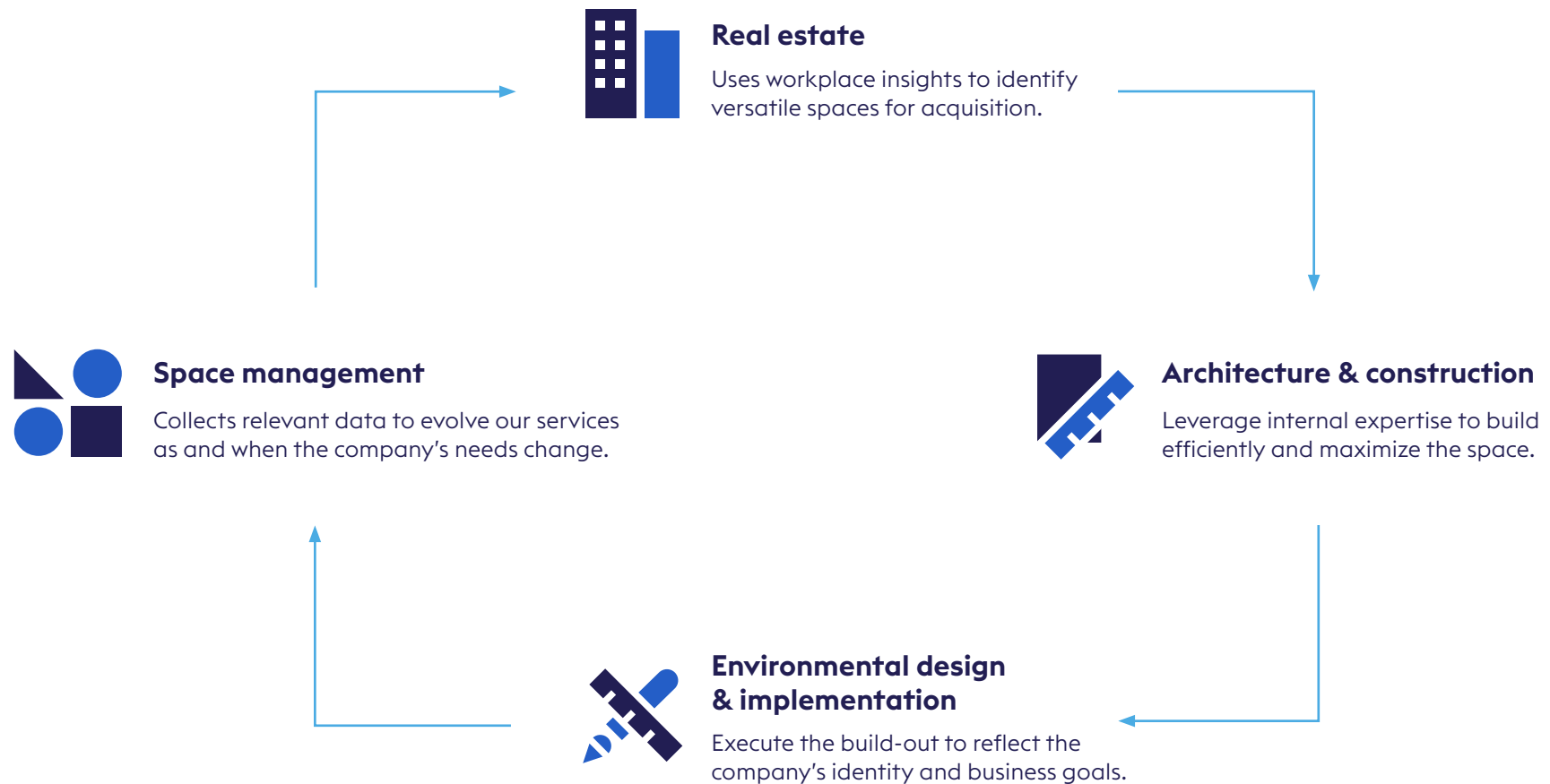
We create a holistic workspace offering – addressing physical, data, and service requirements – designed to meet and respond to the company's needs.

Manage

We offer dedicated space management services, while collecting relevant anonymous data to evolve our services as and when the company's needs change.

Workplace strategy

Informs our business across all phases



Request our Global Lookbook



© 2022 KNOTEL.

The information contained herein has been obtained from sources deemed reliable but has not been verified and no guarantee, warranty or representation, either express or implied, is made with respect to such information. Terms of sale or lease and availability are subject to change or withdrawal without notice.