



80 Dean Street

Soho, London, W1D 3SL

Rent

£82.50 psf.

Service Charge

£12 psf.

Accommodation

The 2nd floor is newly refurbished to provide open plan fully fitted office space.

The space offers a kitchenette, great natural light and good ceiling heights.

Possibility for more space if required.

Availability

Floor.	Size (sq. ft)	Availability
2nd Floor	734 sq ft	Now

OFFICE TO LET

Property Highlights

- Plug and Play
- Newly Refurbished
- Great Transport Links

Location

The property is located in the heart of Soho. Surrounded by an array of independent shops and restaurants.

The property benefits from being a 7minute walk from Oxford Street, Tottenham Court Road and Piccadilly Circus.

Description

Amenities include;

- Kitchenette
- Fully Fitted
- Good natural light
- Excellent Transport links
- Raised Floors
- 24-hour access

Viewing: Staff are unaware of the pending disposal; therefore, viewing is strictly by prior appointment through sole agents Newmark:

Subject to contract.

David Hume

t 020-7462-9128
M 07973-248-756
david.hume@nrmk.com

Charlotte Penrice

t 020-7462-9120
M 07776-594-945
charlotte.penrice@nrmk.com

Harry Hopson

t 020-7462-9137
M 07587-539-047
harry.hopson@nrmk.com

84 Grosvenor Street
London, W1K 3JZ United
Kingdom

nrmk.com

NEWMARK

80 Dean Street

Soho, London, W1D 3SL

Tenure

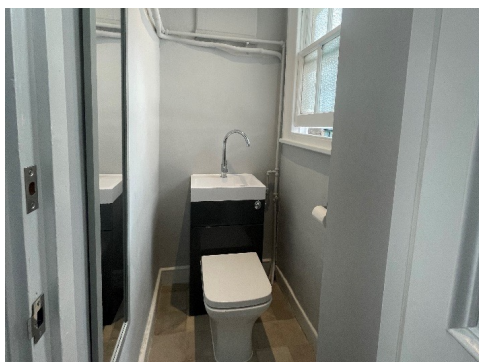
Available by way of new lease direct from the landlord.

EPC

Upon request.

Business Rates

Interested parties are encouraged to make their own enquiries with the Local Authority.



NEWMARK HDH LIMITED ("NEWMARK") (AND THEIR JOINT AGENTS WHERE APPLICABLE) THEMSELVES FOR THE VENDORS OR LESSORS OF THE PROPERTY FOR WHOM THEY ACT, GIVE NOTICE THAT:

1. These particulars are provided merely as a general guide to the property. They are not and shall not hereafter become part of any offer or contract;
2. Newmark cannot guarantee the accuracy of any description, dimensions, references to condition, necessary permissions for use and occupation and other details contained herein and prospective purchasers or tenants must not rely on them as statements of fact representations and must satisfy themselves as to their accuracy;
3. No person in the employment of Newmark has the authority to make or give any representation or warranty whatever in relation to this property; Newmark will not be liable in negligence or otherwise for any loss arising from the use of these particulars.

NEWMARK

Soho, London, W1D 3SL

The floor plan shows a building with the following layout:

- Top Section:** A long room with a total width of 9432. It contains several tables and chairs. Dimensions for tables include 1000×1000 , 1000×800 , 1000×600 , and 1000×400 . There are also dimensions for 1000×600 and 1000×800 .
- Middle Section:** A central area with a staircase and a large open space. Dimensions for tables include 1200×600 and 1000×600 . There are also dimensions for 1000×600 and 1000×800 .
- Bottom Section:** A long room with a total width of 9432. It contains several tables and chairs. Dimensions for tables include 1000×1000 , 1000×800 , 1000×600 , and 1000×400 . There are also dimensions for 1000×600 and 1000×800 .

1. These particulars are provided merely as a general guide to the property. They are not and shall not hereafter become part of any offer or contract;
2. Newmark cannot guarantee the accuracy of any description, dimensions, references to condition, necessary permissions for use and occupation and other details contained herein and prospective purchasers or tenants must not rely on them as statements of fact or representations and must satisfy themselves as to their accuracy;
3. No person in the employment of Newmark has the authority to make or give any representation or warranty whatever in relation to this property; Newmark will not be liable in negligence or otherwise for any loss arising from the use of these particulars.

NEWMARK