



39-42 New Bond Street

London, W1S 2SQ

Accommodation

The accommodation comprises the following areas:

Name	sq ft	sq m	Availability
5 th	1,756 sq ft	163.14 sq m	Available
Total:	1,756 sq ft	163.14 sq m	

Location

Positioned on the prestigious New Bond Street, the building has a fantastic choice of world-class amenities on its doorstep. The building is a short stroll from Bond Street and Oxford Circus which both provide excellent connectivity with direct trains to key London underground and national rail stations. Connectivity will soon be further enhanced with the opening of the Elizabeth Line at Bond Street and its new entrance on Hanover Square, less than 1 minute's walk from the building.

TO LET

1,756 sq ft

(163.14 sq m)

Property Highlights

- Fully fitted and furnished penthouse suite with large terrace.
- Fully fitted and furnished
- Large roof terrace
- Meeting rooms
- Private office
- kitchenette
- Air conditioning
- Raised flooring

Viewing: Staff are unaware of the pending disposal; therefore, viewing is strictly by prior appointment through sole agents Newmark:

Subject to contract.

Percy Clarke

t 020-7462-9104
M 07826-672309
percy.clarke@nrmk.com

David Hume

t 020-7462-9128
M 07973-248-756
david.hume@nrmk.com

84 Grosvenor Street
London, W1K 3JZ United
Kingdom

nrmk.com

NEWMARK

39-42 New Bond Street

London, W1S 2SQ

Summary

Available Size	1,756 sq ft
Rent	£92.50 per sq ft
Rates Payable	£30 per sq ft
Service Charge	£12 per sq ft
Car Parking	N/A
Estate Charge	N/A
EPC Rating	Upon Enquiry

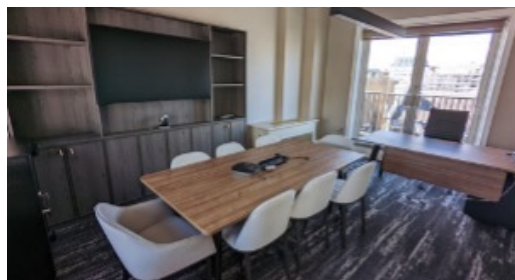
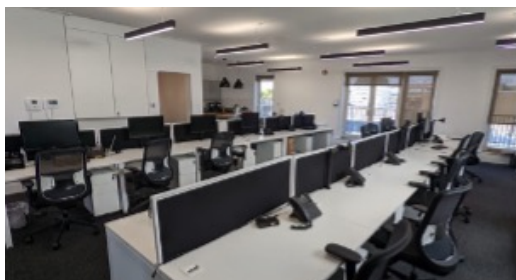
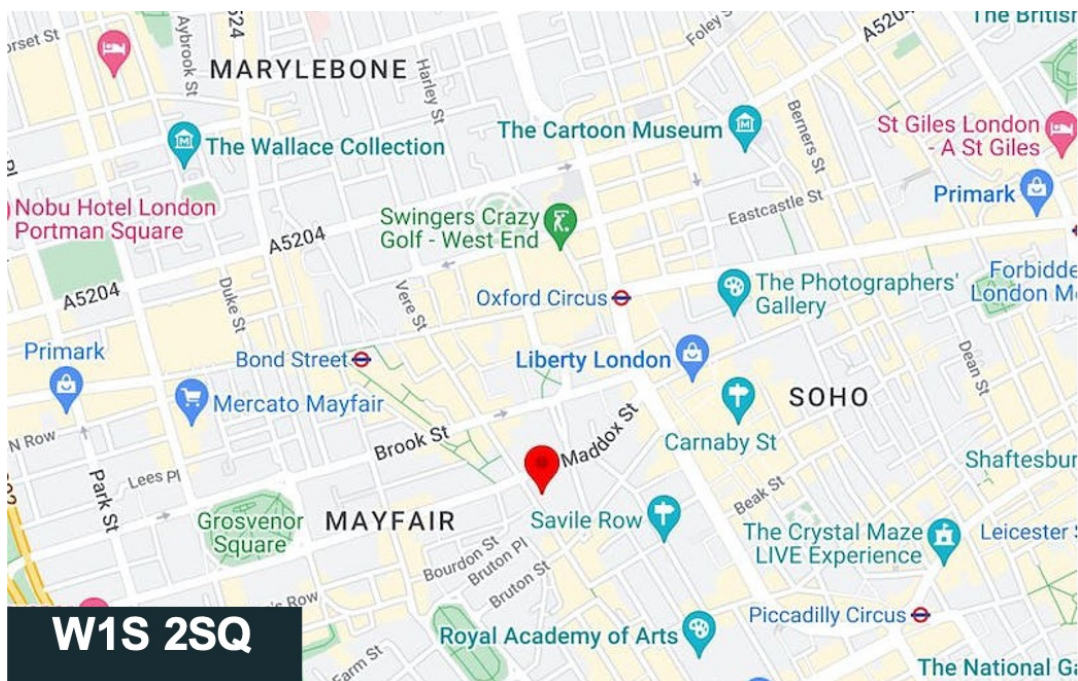
Terms

New lease available from the landlord.

Description

Self contained penthouse suite available in an attractive period building with 500 sq ft of private terrace space overlooking New Bond Street.

Fully fitted and furnished to a high specification the accommodation comprises 1x private office; 1x board room and an additional meeting room as well as open plan office accommodation.



NEWMARK HDH LIMITED ("NEWMARK") (AND THEIR JOINT AGENTS WHERE APPLICABLE) THEMSELVES FOR THE VENDORS OR LESSORS OF THE PROPERTY FOR WHOM THEY ACT, GIVE NOTICE THAT:

1. These particulars are provided merely as a general guide to the property. They are not and shall not hereafter become part of any offer or contract;
2. Newmark cannot guarantee the accuracy of any description, dimensions, references to condition, necessary permissions for use and occupation and other details contained herein and prospective purchasers or tenants must not rely on them as statements of fact representations and must satisfy themselves as to their accuracy;
3. No person in the employment of Newmark has the authority to make or give any representation or warranty whatever in relation to this property; Newmark will not be liable in negligence or otherwise for any loss arising from the use of these particulars.

NEWMARK

39-42 New Bond Street

London, W1S 2SQ



NEWMARK HDH LIMITED ("NEWMARK") (AND THEIR JOINT AGENTS WHERE APPLICABLE) THEMSELVES FOR THE VENDORS OR LESSORS OF THE PROPERTY FOR WHOM THEY ACT, GIVE NOTICE THAT:

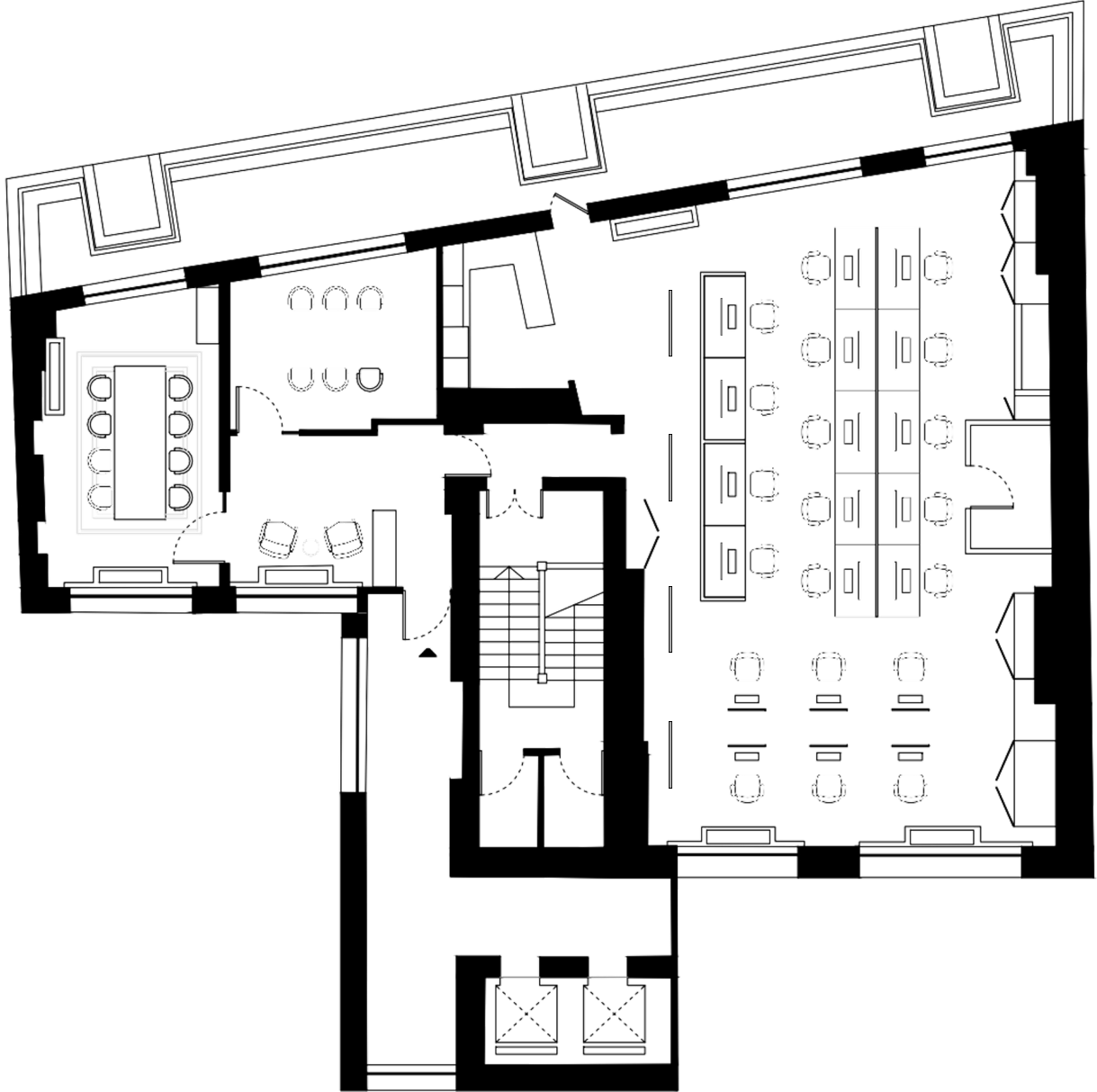
1. These particulars are provided merely as a general guide to the property. They are not and shall not hereafter become part of any offer or contract;
2. Newmark cannot guarantee the accuracy of any description, dimensions, references to condition, necessary permissions for use and occupation and other details contained herein and prospective purchasers or tenants must not rely on them as statements of fact representations and must satisfy themselves as to their accuracy;
3. No person in the employment of Newmark has the authority to make or give any representation or warranty whatever in relation to this property; Newmark will not be liable in negligence or otherwise for any loss arising from the use of these particulars.

NEWMARK

39-42 New Bond Street

London, W1S 2SQ

Floor Plan



NEWMARK HDH LIMITED ("NEWMARK") (AND THEIR JOINT AGENTS WHERE APPLICABLE) THEMSELVES FOR THE VENDORS OR LESSORS OF THE PROPERTY FOR WHOM THEY ACT, GIVE NOTICE THAT:

1. These particulars are provided merely as a general guide to the property. They are not and shall not hereafter become part of any offer or contract;
2. Newmark cannot guarantee the accuracy of any description, dimensions, references to condition, necessary permissions for use and occupation and other details contained herein and prospective purchasers or tenants must not rely on them as statements of fact or representations and must satisfy themselves as to their accuracy;
3. No person in the employment of Newmark has the authority to make or give any representation or warranty whatever in relation to this property; Newmark will not be liable in negligence or otherwise for any loss arising from the use of these particulars.

NEWMARK