



1st floor 15 Hanover Square Mayfair

London W1S

OFFICE TO LET

Rent

£65 per sq ft

Accommodation

The accommodation covers the entire first floor of an attractive period building in the heart of Mayfair.

The offices are currently arranged as open plan office space with 3 x private offices room and 2 x offices/meeting room with demised fully fitted kitchen and breakout area with demised male and female w.c's.

The office overlooks Hanover Square gardens. There is considerable improvement work to the public realm in the immediate vicinity which will be further benefit 15 Hanover Squares prime location.

Tenure

The floor is available by new lease directly from the landlord.

Property Highlights

- Fully Fitted, Plug & Play
- 1,314 sq ft
- Period Building
- Overlooking Hanover Sqr

Location

The property is located on prime position on Hanover Square.

This Georgian Townhouse building benefits from excellent transport links situated in close proximity of both Bond Street (Central & Jubilee Line) and Oxford Circus (Central, Bakerloo, Victoria Line) Underground Stations.

Upon completion the office will benefit from additional connectivity from the Victoria Line which is located opposite the building.

Viewing: Staff are unaware of the pending disposal; therefore, viewing is strictly by prior appointment through sole agents Newmark:

Subject to contract.

Percy Clarke

t 020-7462-9104
M 07826-672309
percy.clarke@nrmk.com

Charlotte Penrice

t 020-7462-9120
M 077765-94945
charlotte.penrice@nrmk.com

84 Grosvenor Street
London, W1K 3JZ United
Kingdom

nrmk.com

NEWMARK

15 Hanover Square Mayfair

London W1S 1HT

Business Rates

Interested parties should make their own enquiries with City of Westminster Council (020 8315 2050).

Description

Amenities include:

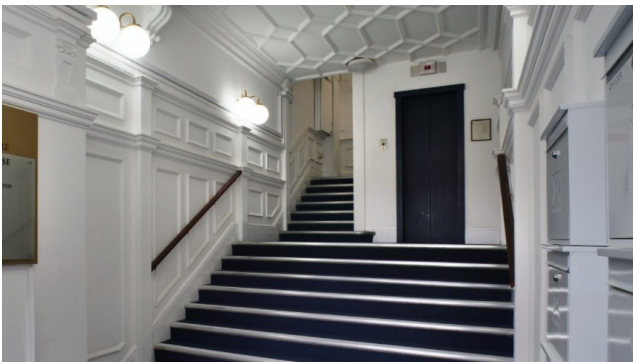
- Fitted kitchen
- Zoned Air conditioning
- Excellent natural light via sash windows
- Demised w.c
- Meeting rooms/boardrooms
- Additional meeting rooms available
- Garden square views

EPC

The building achieved a rating of D.

Service Charge

£15.50 per sq ft



NEWMARK HDH LIMITED ("NEWMARK") (AND THEIR JOINT AGENTS WHERE APPLICABLE) THEMSELVES FOR THE VENDORS OR LESSORS OF THE PROPERTY FOR WHOM THEY ACT, GIVE NOTICE THAT:

1. These particulars are provided merely as a general guide to the property. They are not and shall not hereafter become part of any offer or contract;
2. Newmark cannot guarantee the accuracy of any description, dimensions, references to condition, necessary permissions for use and occupation and other details contained herein and prospective purchasers or tenants must not rely on them as statements of fact representations and must satisfy themselves as to their accuracy;
3. No person in the employment of Newmark has the authority to make or give any representation or warranty whatever in relation to this property; Newmark will not be liable in negligence or otherwise for any loss arising from the use of these particulars.

NEWMARK