



141 Moorgate

London, EC2

Rent

£ 41.25 psf.

Accommodation

The office is located on the second floor and provides an open plan office space. The space benefits from having 2 meeting rooms and a kitchenette.

Service Charge

£ 9 psf.

Availability

Second Floor	2,606 sq ft	Availability
Total:	2,606 sq ft	Available

OFFICE TO LET

Property Highlights

- 2,606 sq. ft
- Plug and Play
- Great public transport links

Location

Located at the junction of Moorgate and Moor Place, adjacent to Moorgate Underground Station. The property is close to Moorgate, Liverpool Street and Bank Stations.

Description

Amenities include;

- Kitchenette
- Bike racks and showers
- Fully Fitted
- X2 Meeting rooms

Tenure

Available by way of an assignment until August 2024.

Viewing: Staff are unaware of the pending disposal; therefore, viewing is strictly by prior appointment through sole agents Newmark:

Subject to contract.

Harry Hopson

t 020-7462-9137
M 07587-539-047
harry.hopson@nmrk.com

Charlotte Penrice

t 020-7462-9120
M 07776-594-945
charlotte.penrice@nmrk.com

84 Grosvenor Street
London, W1K 3JZ United
Kingdom

nmrk.com

NEWMARK

141 Moorgate

London, EC2

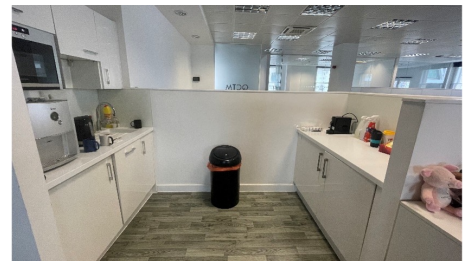
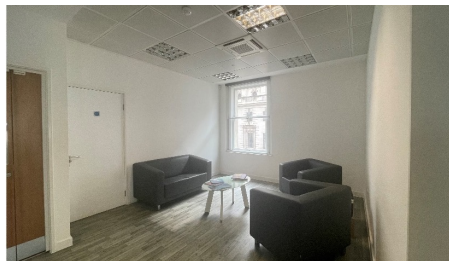
Business Rates

We are advised that rates are approximately £16.20 psf.

Interested parties are encouraged to make their own enquiries with the Local Authority.

EPC

Available upon request.



NEWMARK HDH LIMITED ("NEWMARK") (AND THEIR JOINT AGENTS WHERE APPLICABLE) THEMSELVES FOR THE VENDORS OR LESSORS OF THE PROPERTY FOR WHOM THEY ACT, GIVE NOTICE THAT:

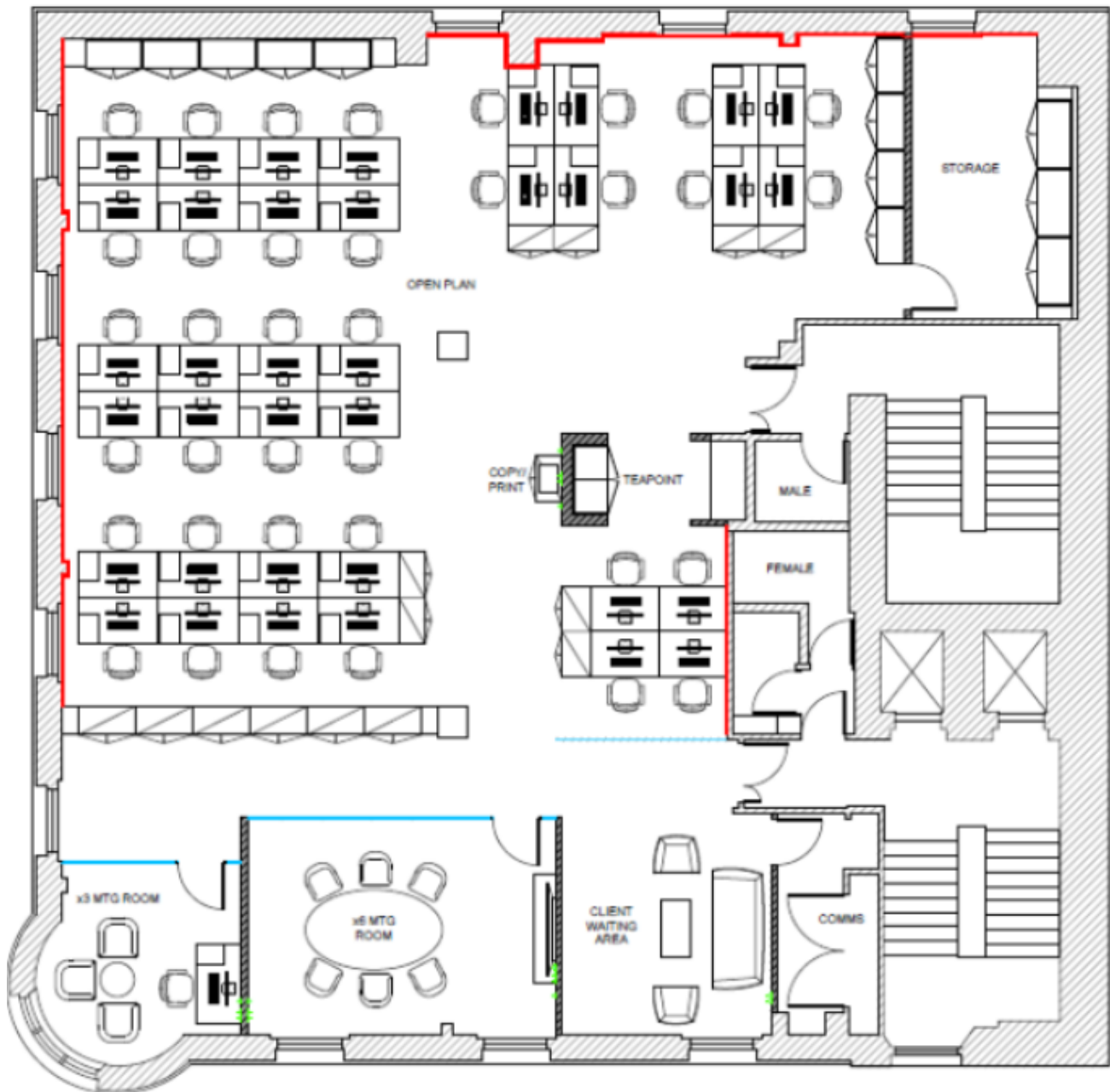
1. These particulars are provided merely as a general guide to the property. They are not and shall not hereafter become part of any offer or contract;
2. Newmark cannot guarantee the accuracy of any description, dimensions, references to condition, necessary permissions for use and occupation and other details contained herein and prospective purchasers or tenants must not rely on them as statements of fact representations and must satisfy themselves as to their accuracy;
3. No person in the employment of Newmark has the authority to make or give any representation or warranty whatever in relation to this property; Newmark will not be liable in negligence or otherwise for any loss arising from the use of these particulars.

NEWMARK

141 Moorgate

London, EC2

Floor Plan



NEWMARK HDH LIMITED ("NEWMARK") (AND THEIR JOINT AGENTS WHERE APPLICABLE) THEMSELVES FOR THE VENDORS OR LESSORS OF THE PROPERTY FOR WHOM THEY ACT, GIVE NOTICE THAT:

1. These particulars are provided merely as a general guide to the property. They are not and shall not hereafter become part of any offer or contract;
2. Newmark cannot guarantee the accuracy of any description, dimensions, references to condition, necessary permissions for use and occupation and other details contained herein and prospective purchasers or tenants must not rely on them as statements of fact or representations and must satisfy themselves as to their accuracy;
3. No person in the employment of Newmark has the authority to make or give any representation or warranty whatever in relation to this property; Newmark will not be liable in negligence or otherwise for any loss arising from the use of these particulars.

NEWMARK