



MILLENNIUM TOWER

719 2ND AVE | SEATTLE, WA

JESSE OTTELE

206.452.4529

jesse.ottele@nmrk.com

nuveen
REAL ESTATE

CAVAN O'KEEFE

206.395.2903

cavan.okeefe@nmrk.com

NEWMARK



MILLENNIUM TOWER



AVAILABILITIES

	SPACE	SIZE	AVAILABILITY
	Floor 1	5,469 RSF	Available May 2023
	Floor 3	19,125 RSF	Available Now VIEW VIRTUAL TOUR
	Floor 5	8,995 RSF	Available Now
	Floor 6	3,356 - 10,533 RSF	Available Now-Nov 2022
	Floor 7	9,571 RSF (divisible to 2,500 RSF)	Available Now
	Floor 8	11,841 RSF	Available Now VIEW VIRTUAL TOUR
Contiguous 19,548 RSF	Floor 10	4,803 RSF	Available Now
	Floor 11	14,745 RSF	Available Now
Contiguous 26,051 RSF	Floor 13	14,692 RSF	Available Now
	Floor 14	11,359 RSF	Available Now

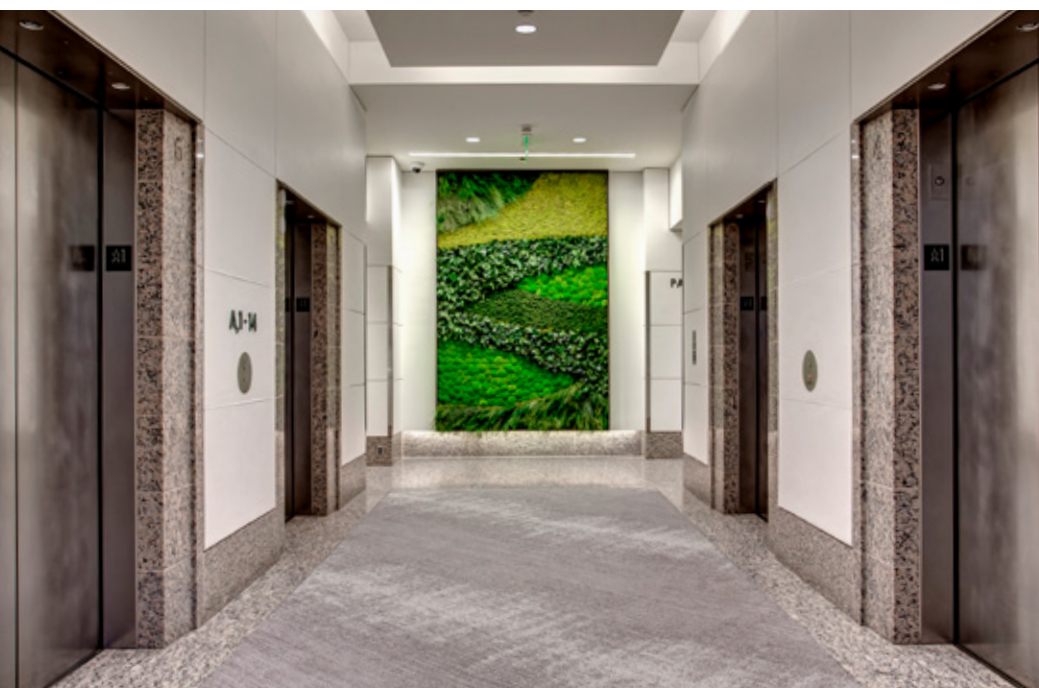
BUILDING HIGHLIGHTS

- Class A office building with efficient floor plates located in Seattle Central Business District
- Within walking distance to the new Seattle waterfront and Pioneer Square.
- Close proximity to Metro buses, Link light rail and Colman Ferry Terminal and Water Taxi
- New Seattle Waterfront currently under construction
- Ideal building for traditional and technology office users.
- Building shower facilities with lockers
- Floor to ceiling glass in SW and NE corners
- Large landscaped deck exclusively for tenant use with seating and WiFi
- Parking ratio of 1/1,000 RSF in building garage with two secure bike storage locations.
- HqO Tenant App for employee engagement





The newly modified Millennium Tower lobby lounge greets you and your guests with natural light and multiple seating options for intimate conversations or simply catching up on a bit of email. Fresh wall accents surround the seating areas for modern elegance, while a moss wall in the elevator bay is like a window to passages throughout the Pacific Northwest. The modern and ample space with visible 24-hour security personnel is the perfect spot to arrange a meeting point for your small group, or settle into one of the cozy seating vignettes with soft textiles for taking a breather after a long day.

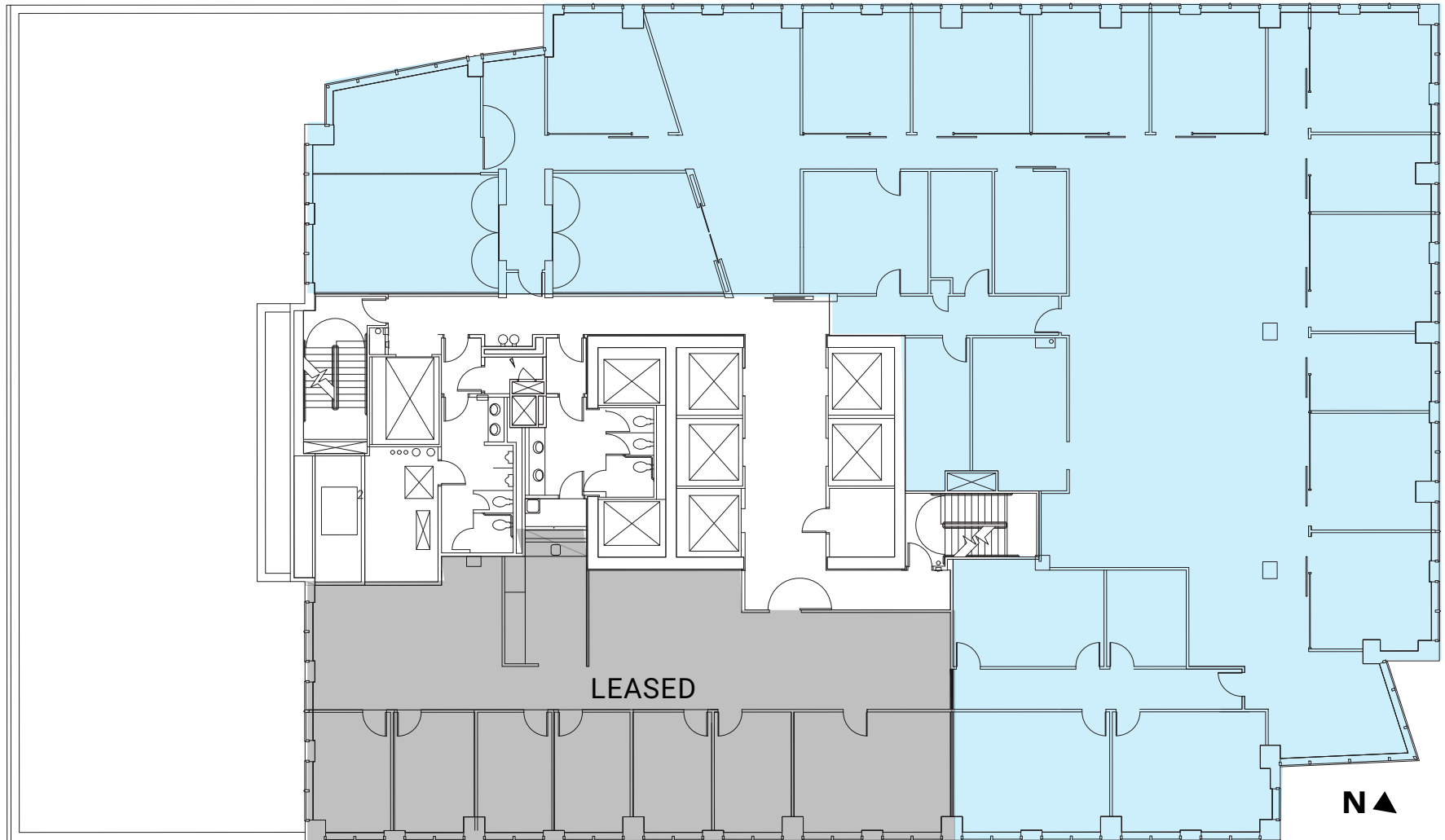


Floor 14 | Suite 1400 | 11,359 RSF

Available Now

Pioneer Square Views

Water Views



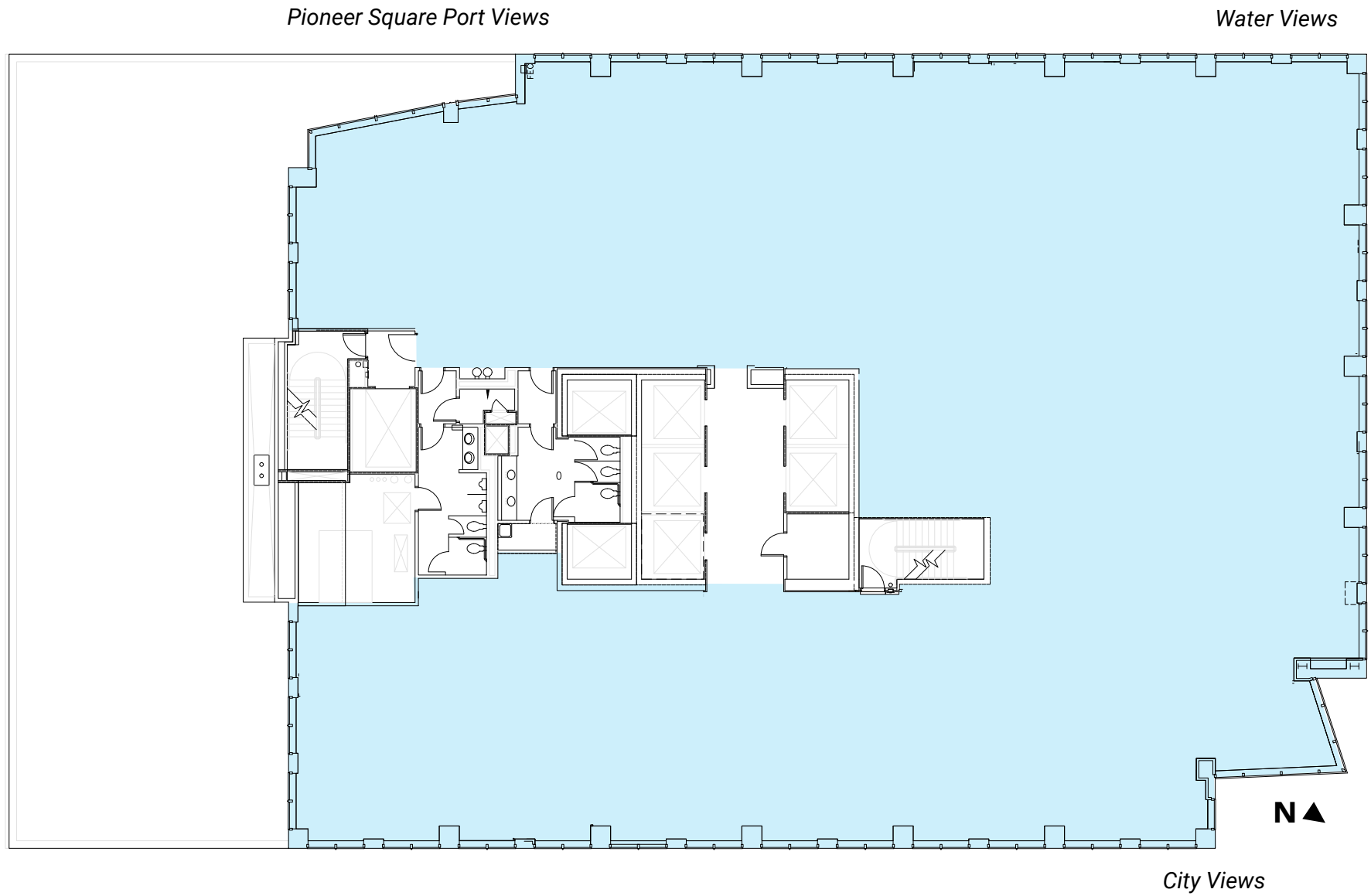
N ▲

City Views

Floor 13 | Suite 1300 | 14,692 RSF

Available Now

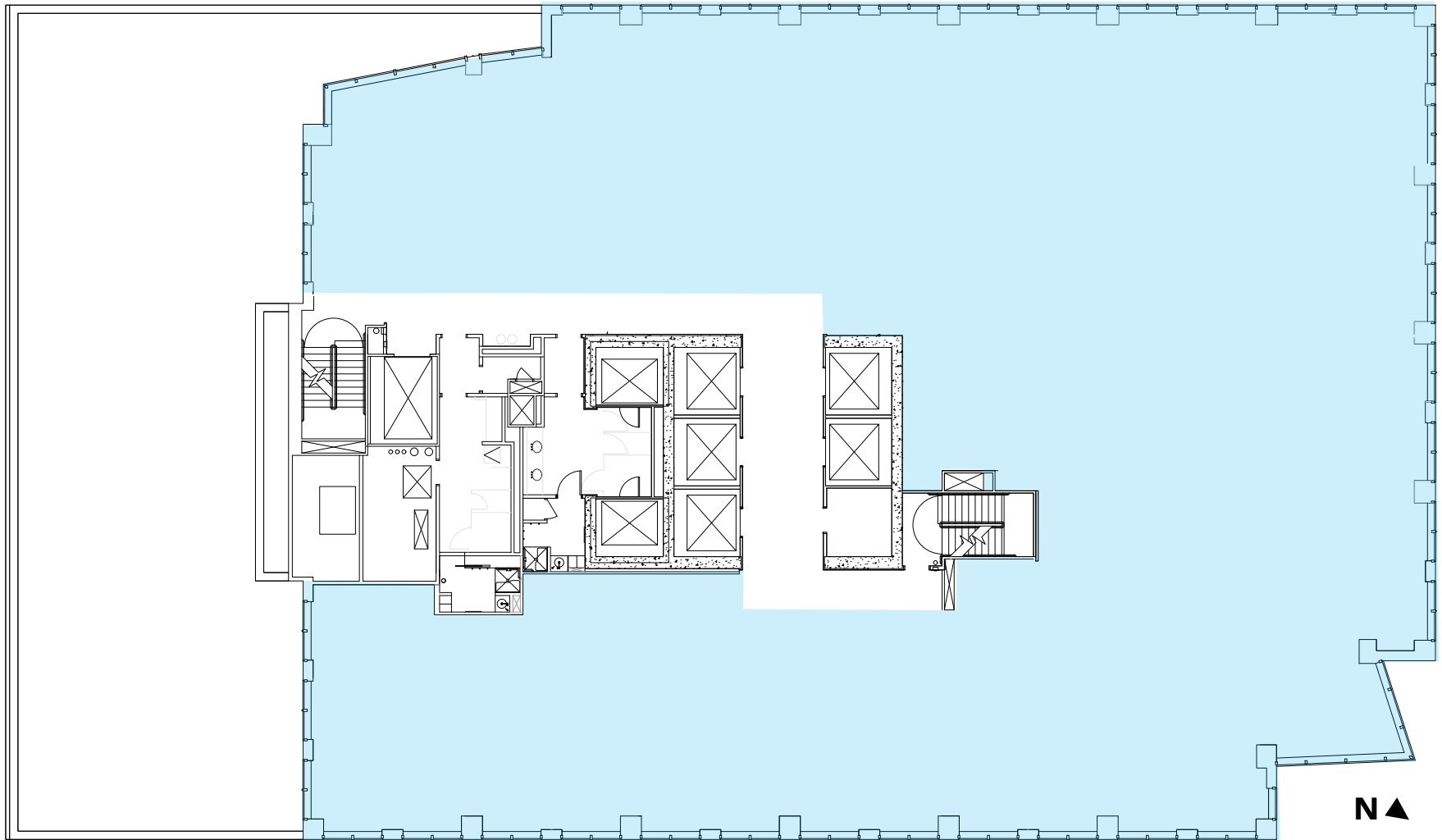
- Full floor, market-ready condition



Floor 11 | Suite 1100 | 14,745 RSF

Available Now

Water Views

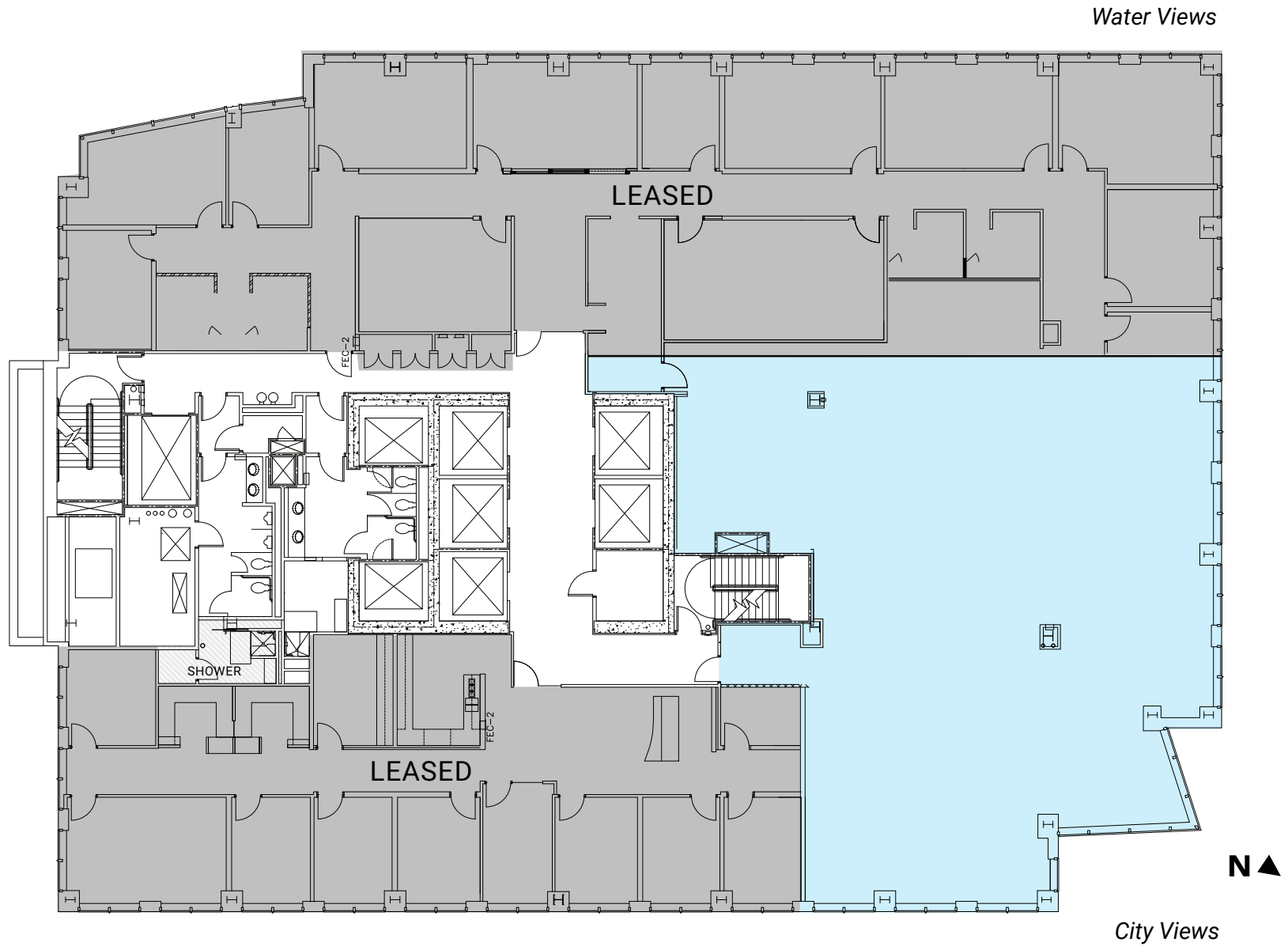


City Views

Floor 10 | Suite 1075 | 4,803 RSF

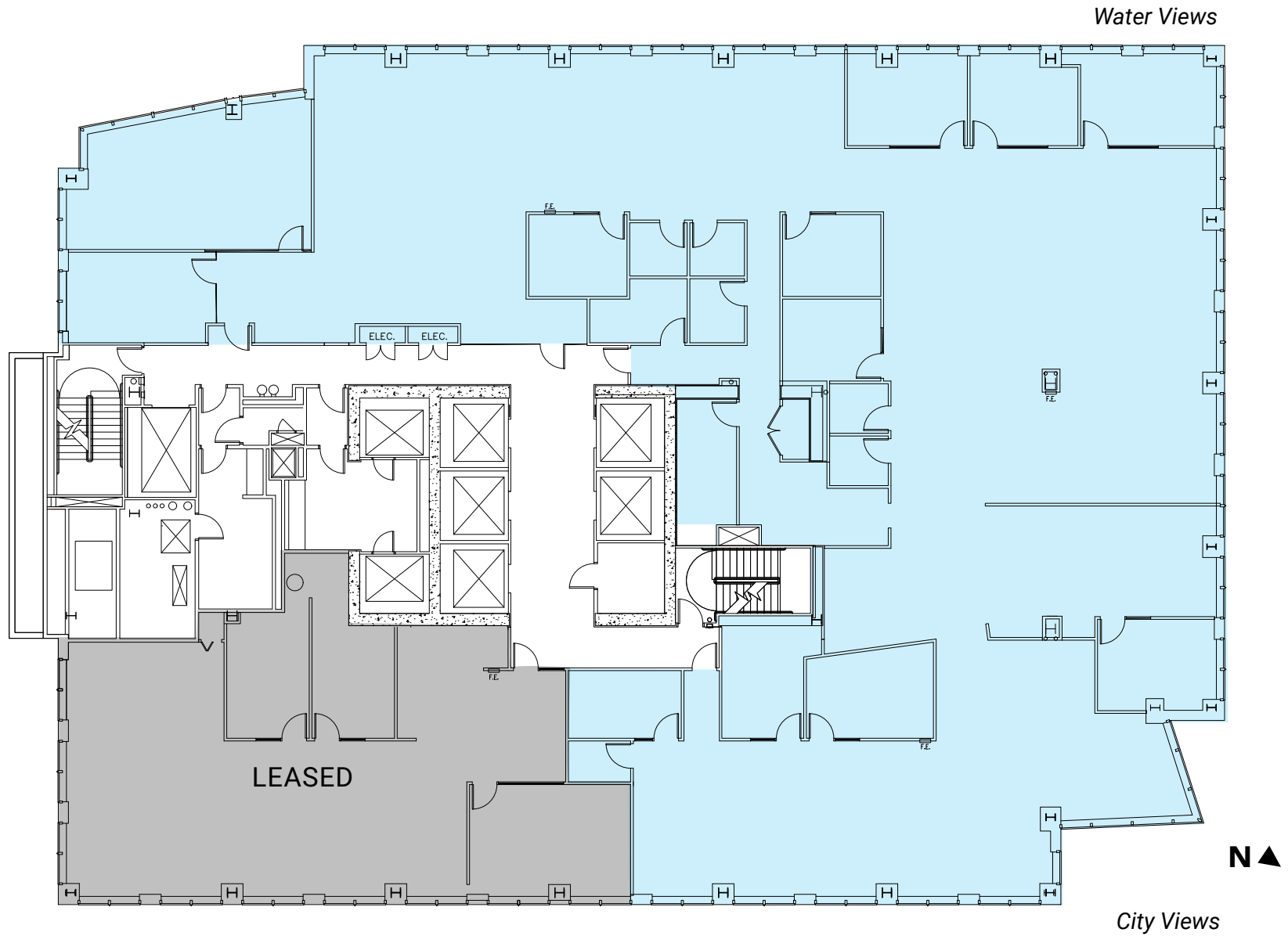
Available Now

- Warm shell space
- Shower on floor



Floor 8 | Suite 800 | 11,841 RSF

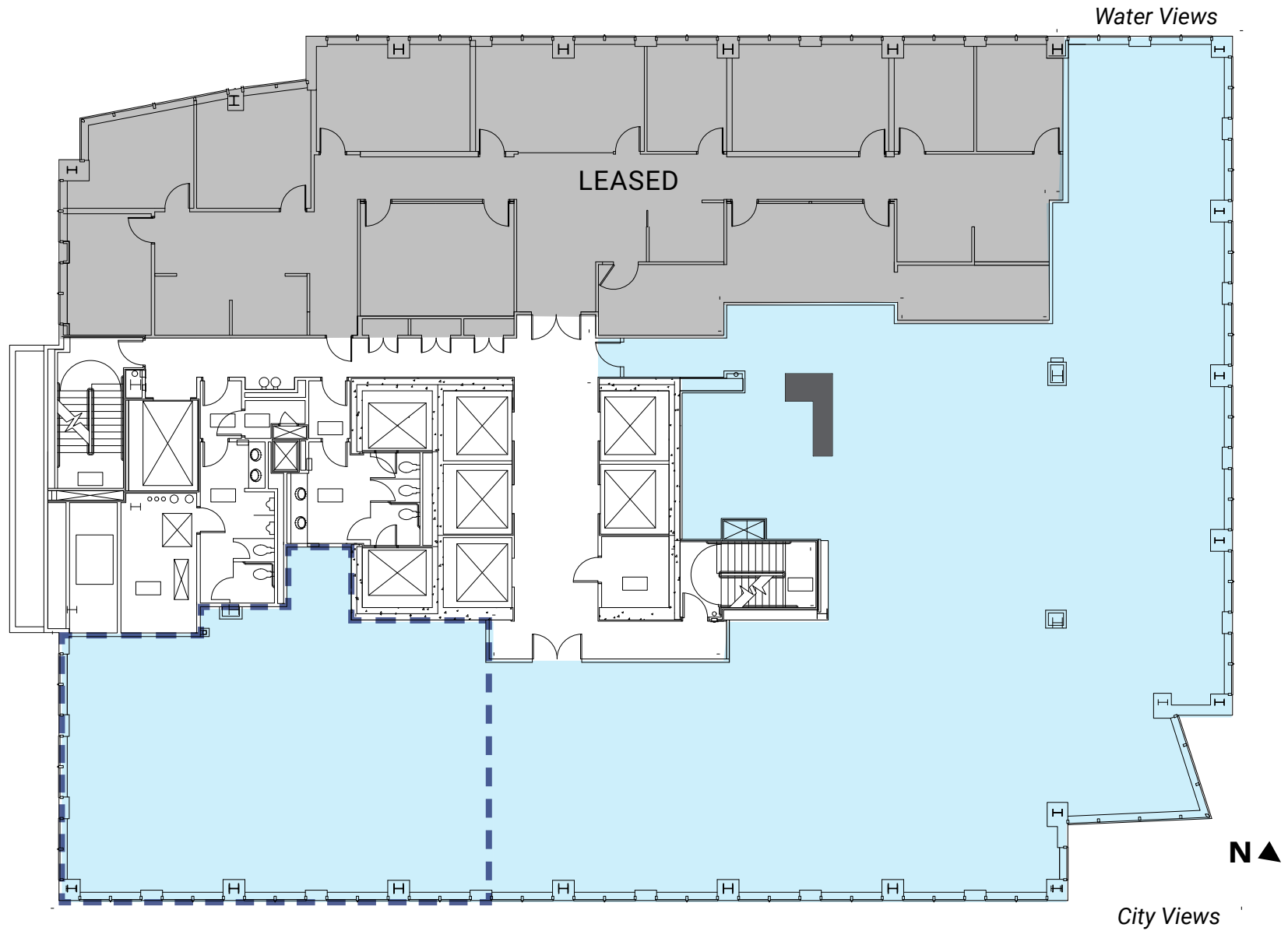
Available Now



Floor 7 | Suite 701 | 9,571 RSF

Available Now

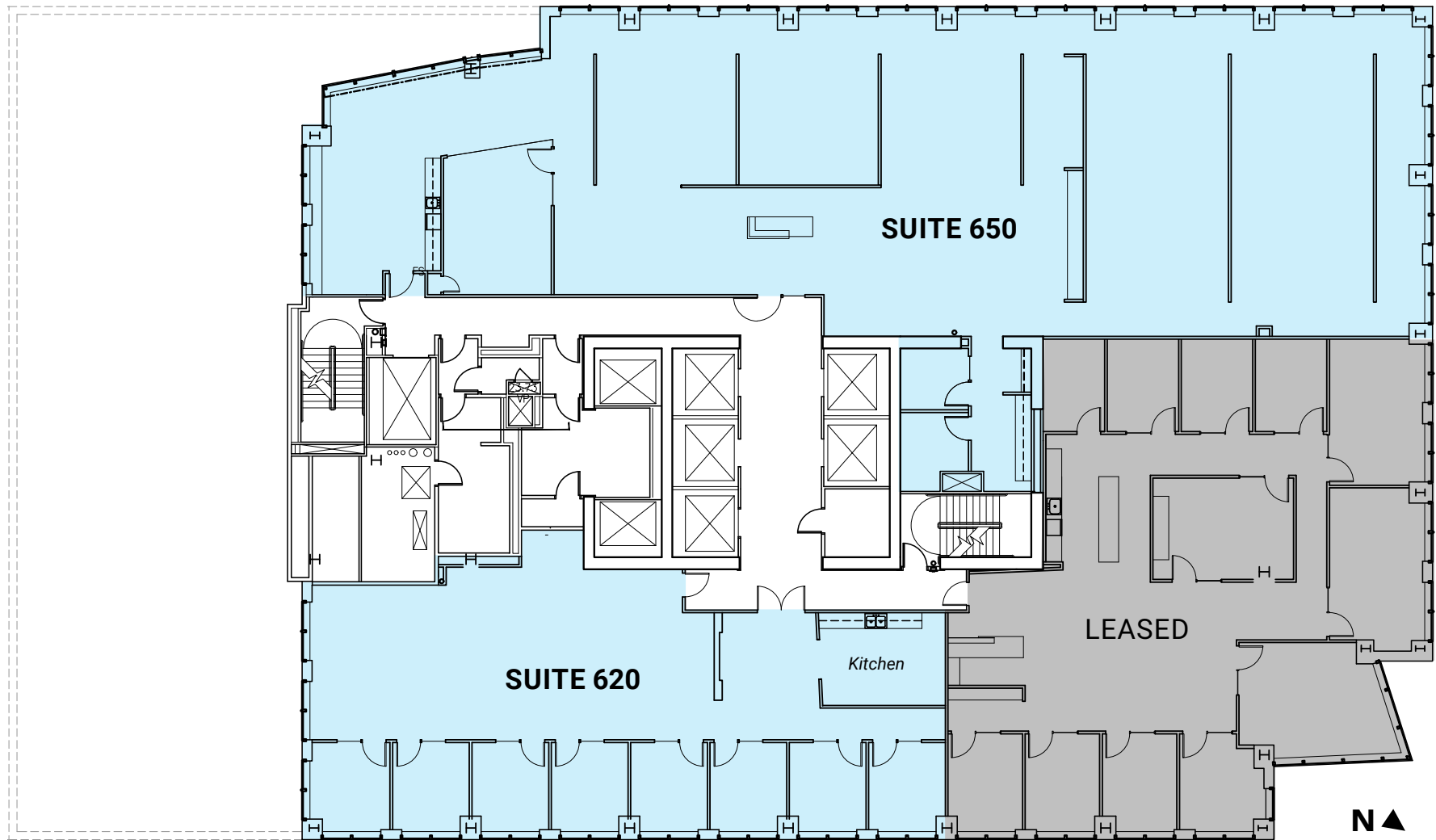
- Divisible to 2,500 RSF (SE Corner)



Floor 6 | Suites 650 + 620 | 10,533 RSF

- **Suite 650** | 7,177 RSF | Available November 1, 2022
- **Suite 620** | 3,356 RSF | Available Now
- New lobby

Water Views

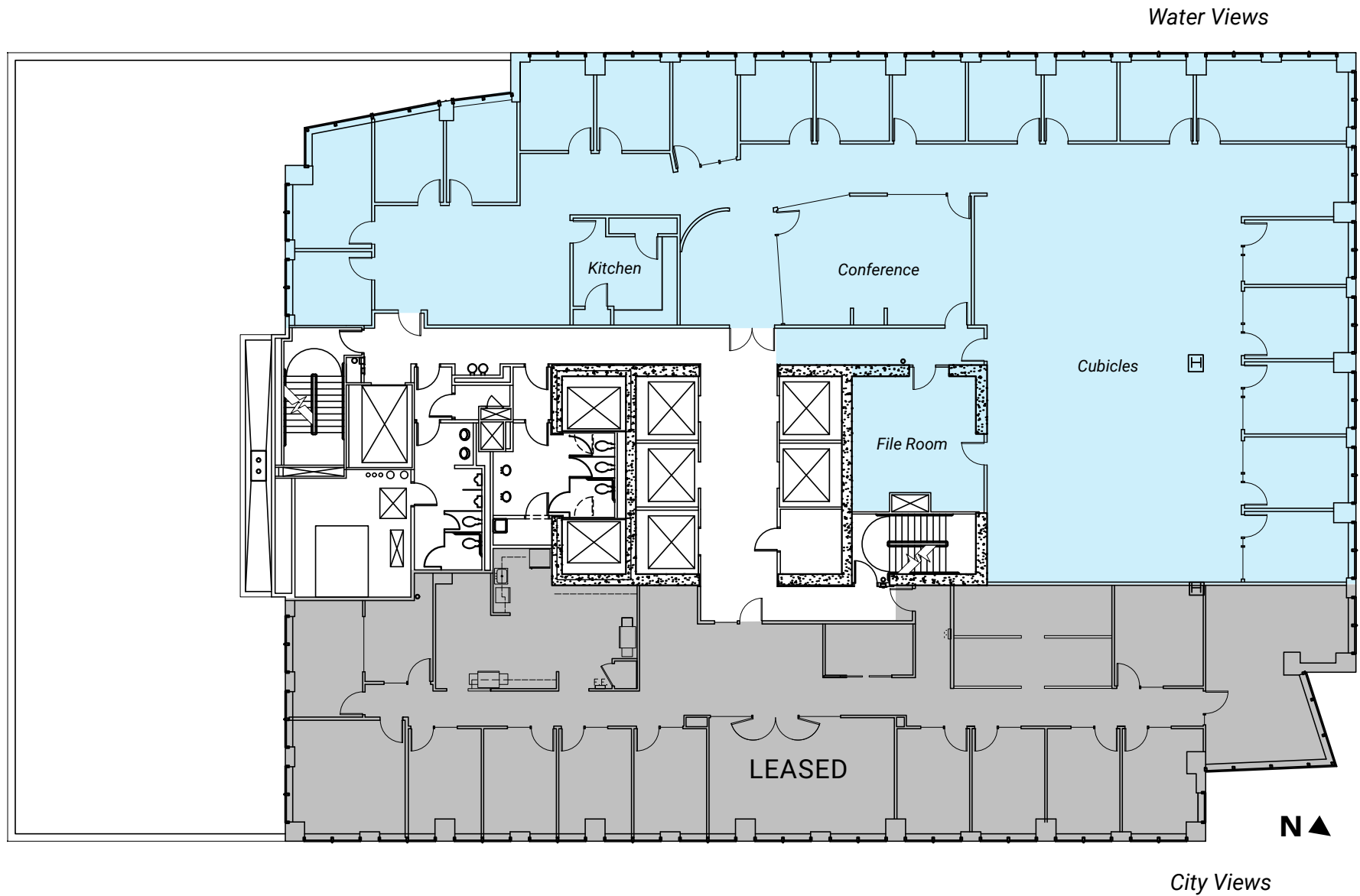


City Views

Floor 5 | Suite 501 | 8,995 RSF

Available Now

- New lobby



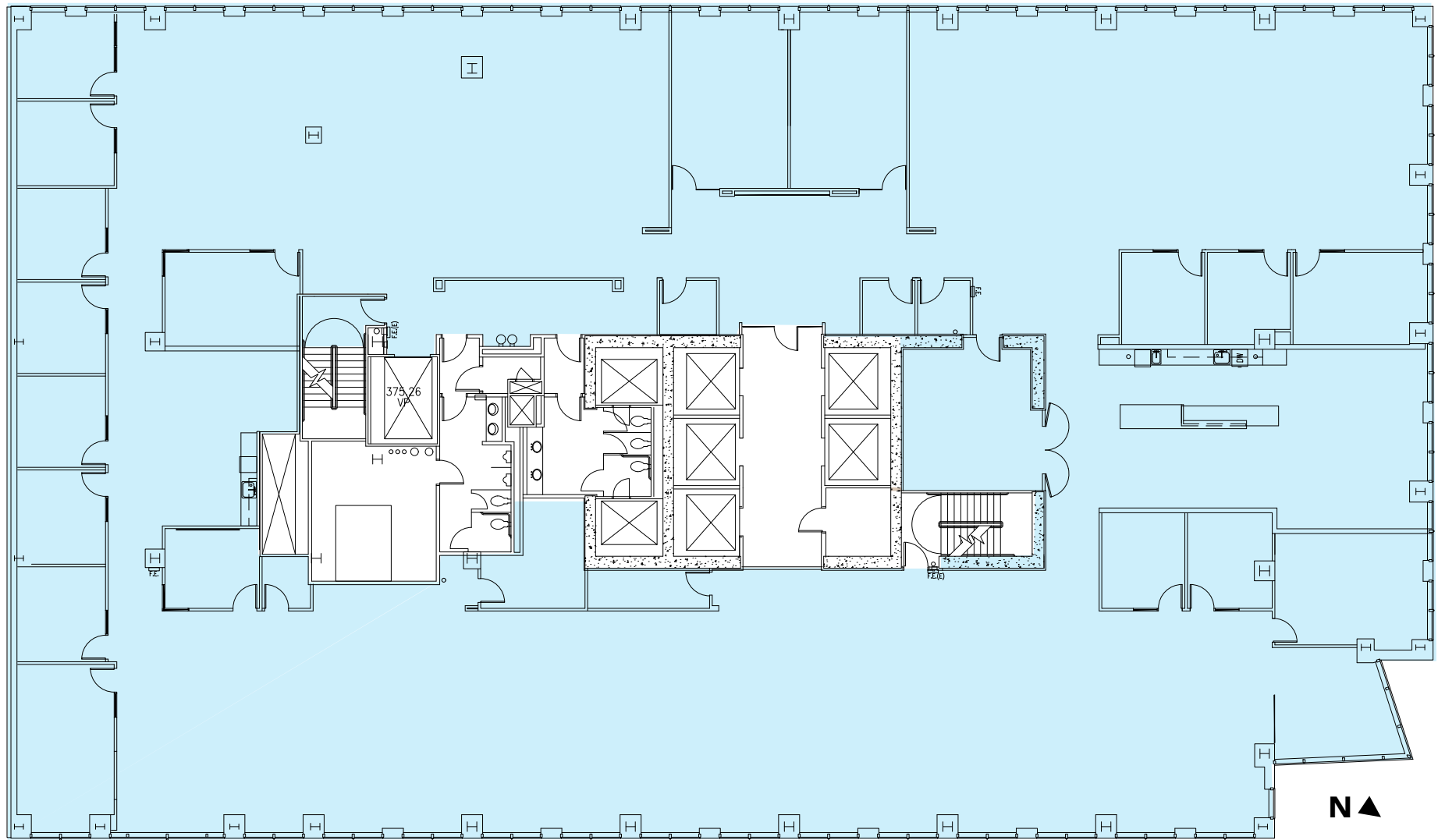
Floor 3 | Suite 300 | 19,125 RSF

Available Now



- Full floor
- Open ceiling, tech build-out

Water Views

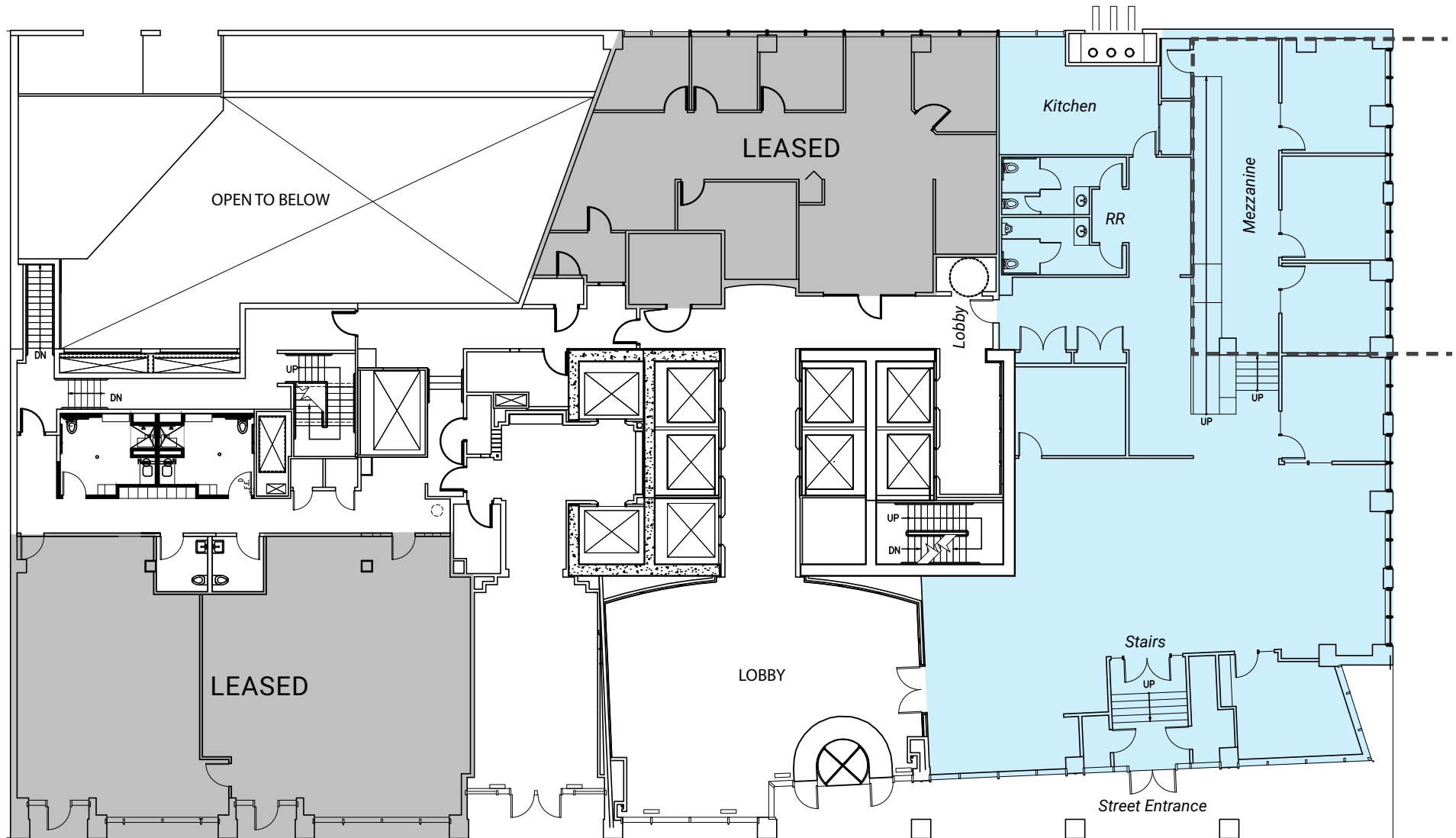


City Views

Floor 1 | Suite 103 | 5,469 RSF

Available May 1, 2023

- Street-level retail space





MILLENNIUM TOWER

719 2ND AVE | SEATTLE, WA

NEWMARK

nuveen
REAL ESTATE

JESSE OTTELE
206.452.4529
jesse.ottele@nmrk.com

CAVAN O'KEEFE
206.395.2903
cavan.okeefe@nmrk.com

The distributor of this communication is performing acts for which a real estate license is required. The information contained herein has been obtained from sources deemed reliable but has not been verified and no guarantee, warranty or representation, either express or implied, is made with respect to such information. Terms of sale or lease and availability are subject to change or withdrawal without notice. 18-1023_7/19