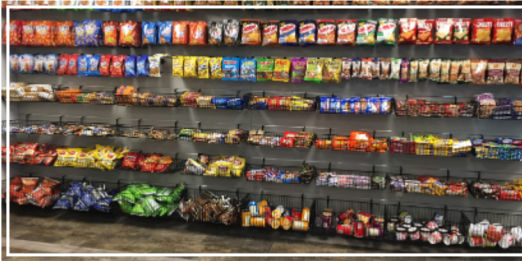


STONERIDGE I

41000 WOODWARD AVENUE, BLOOMFIELD HILLS



PREMISES

- Three-story, 150,000 SF office building with two connected wings

AVAILABILITY

- 2,158 RSF up to 75,000 RSF
- ENTIRE WEST BUILDING

RENTAL RATE

- \$23.50 psf
- 2022 Base Year, plus electricity

FEATURES AND AMENITIES

- **PROMINENT BUILDING SIGNAGE AVAILABLE**
- NEW AMENITY: Fully-equipped fitness center with Peloton bikes
- UPDATED AMENITY: Market Twenty 4 Seven, a self-checkout micro-market now fulfills the grab n' go food service.
- Magnificent wooded setting in the heart of Bloomfield Hills
- Inviting three-story rotunda lobbies and recently renovated common areas and restrooms
- Convenient points of entry, including walk-out access on both first and second floors
- Well-lit parking with adjacent 2-level covered parking deck
- Computerized security/entry access
- Convenient I-75 access less than a mile away
- Nearby hotels and fine restaurants

FOR MORE INFORMATION

Daniel Canvasser
Jack Bergmann
Newmark | nmrk.com
248.350.9500

Dennis Kateff
Kojaian Management Corporation
dkateff@kojaian.com
248.644.7600

NEWMARK

**MORE THAN
BUILDINGS**

LOCATION | BUSINESS | IMAGE | SUCCESS

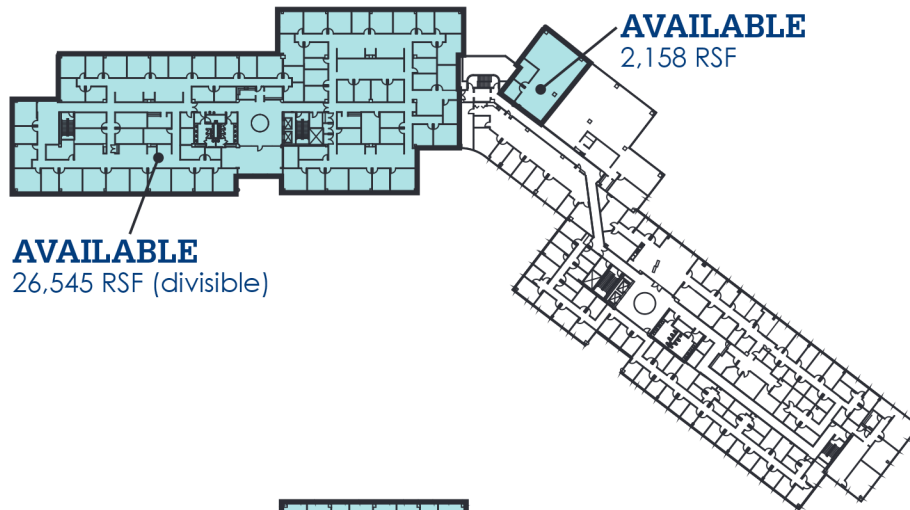
KOJAIANO
KOJAIAN.COM

STONERIDGE I

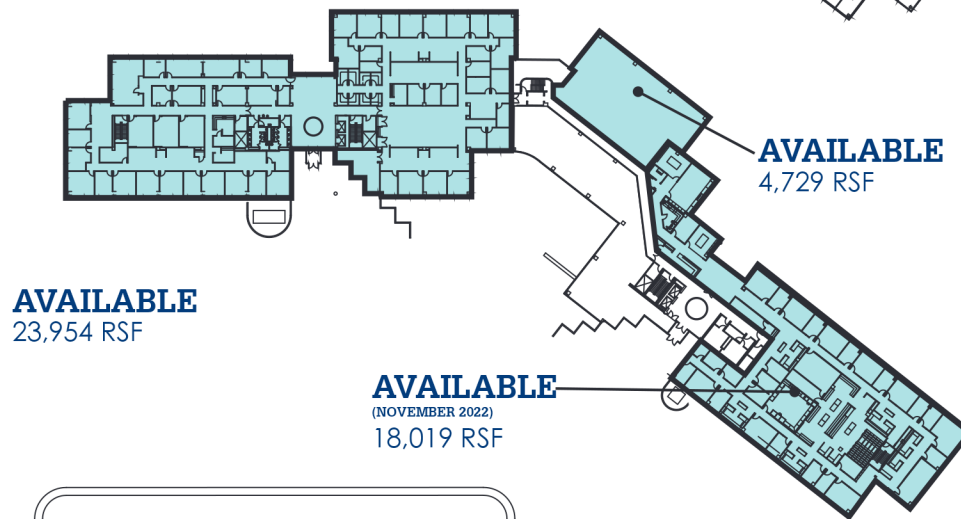
41000 WOODWARD AVENUE, BLOOMFIELD HILLS

 AVAILABLE

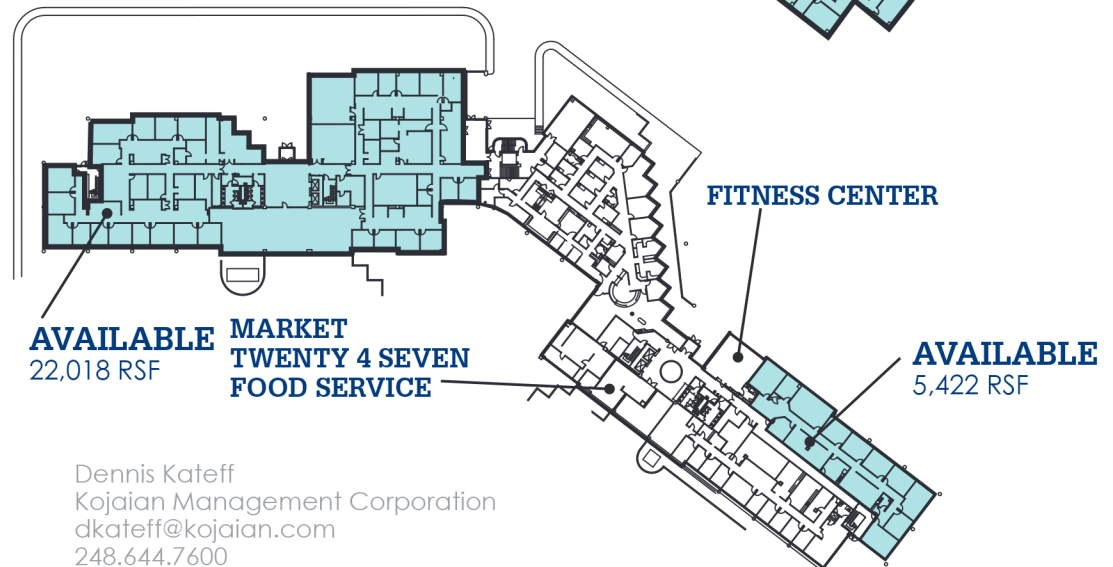
THIRD FLOOR



SECOND FLOOR



GROUND FLOOR



FOR MORE INFORMATION

Daniel Canvasser
Jack Bergmann
Newmark | nmrk.com
248.350.9500

Dennis Kateff
Kojanian Management Corporation
dkateff@kojaian.com
248.644.7600